



IMPRESSIONS MODULAR COLLECTION

ATLANTIC[®]
HOMES

ATLANTIC HOMES

Champion: Manufactured Beautifully

There’s more to us than our name implies. We are a member of the Champion family of homebuilders, which has built more than 1.7 million homes for American families. Collectively, we bring decades of knowledge and experience to building you that special home and the financial strength to deliver lasting value and peace of mind.

There for you

Over the years, we’ve built more than just homes. We’ve built trust in our ability to satisfy our homebuyers’ needs – and we’re confident we can provide you with a home that will meet your needs and exceed your expectations.





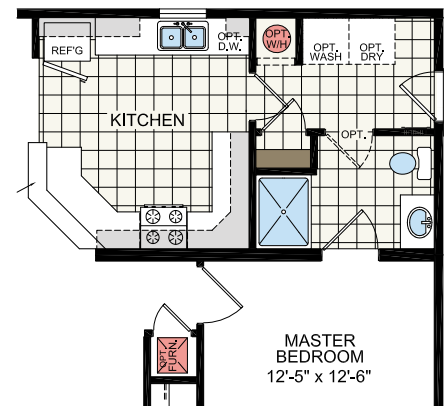
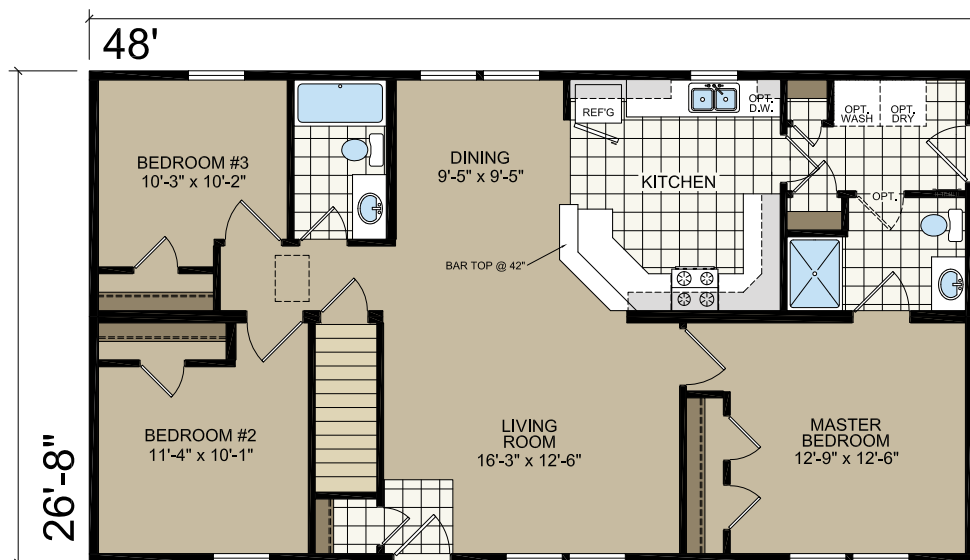


A94878 Ranch

28' x 48'
3 bed-2 bath
1280 sq. ft.



SHOWN WITH OPTIONAL EXTERIOR ELEVATION



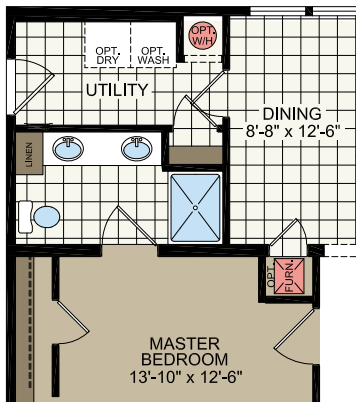
OPTIONAL
FURNACE / WATER HEATER

A95075 Ranch

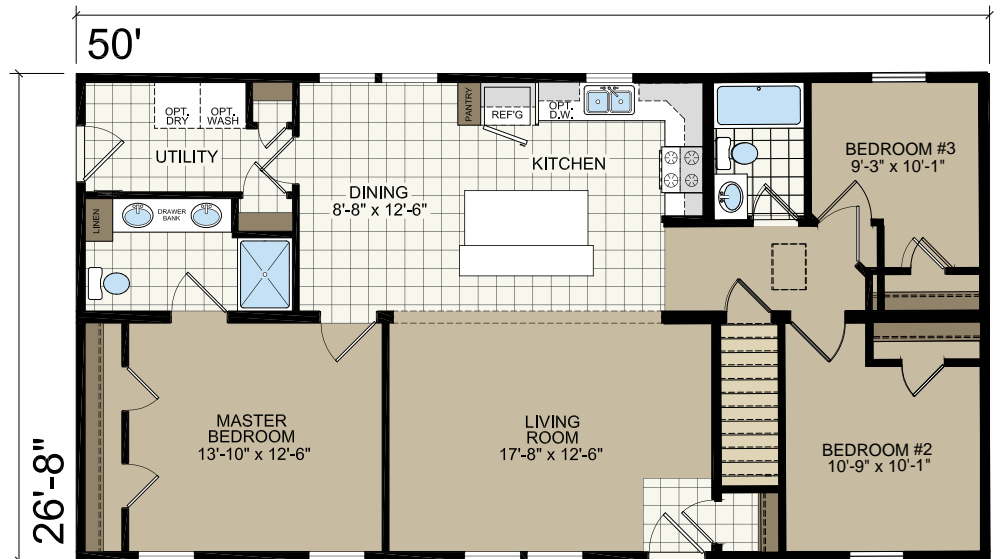
28' x 50'
3 bed-2 bath
1333 sq. ft.



SHOWN WITH OPTIONAL EXTERIOR ELEVATION

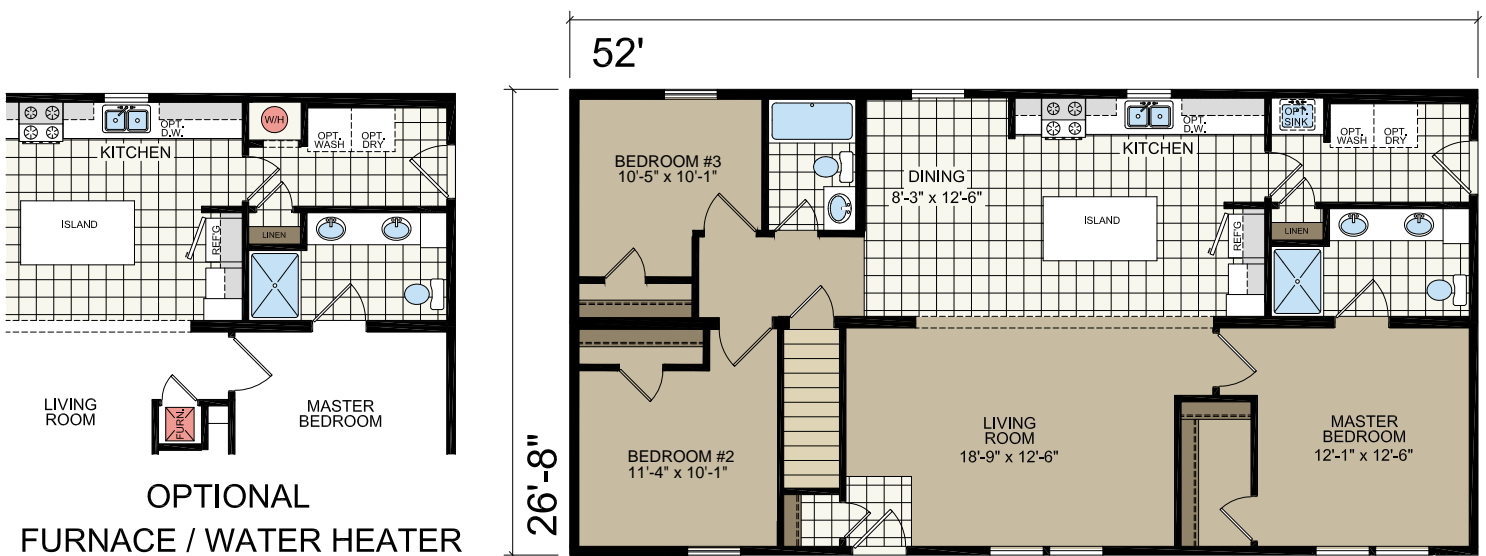


OPTIONAL
FURNACE / WATER HEATER



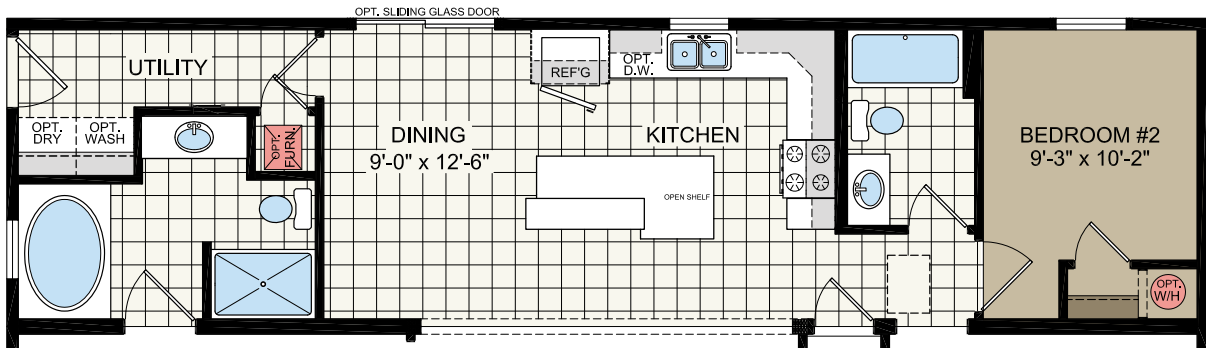
A95275 Ranch

28' x 52'
3 bed-2 bath
1387 sq. ft.

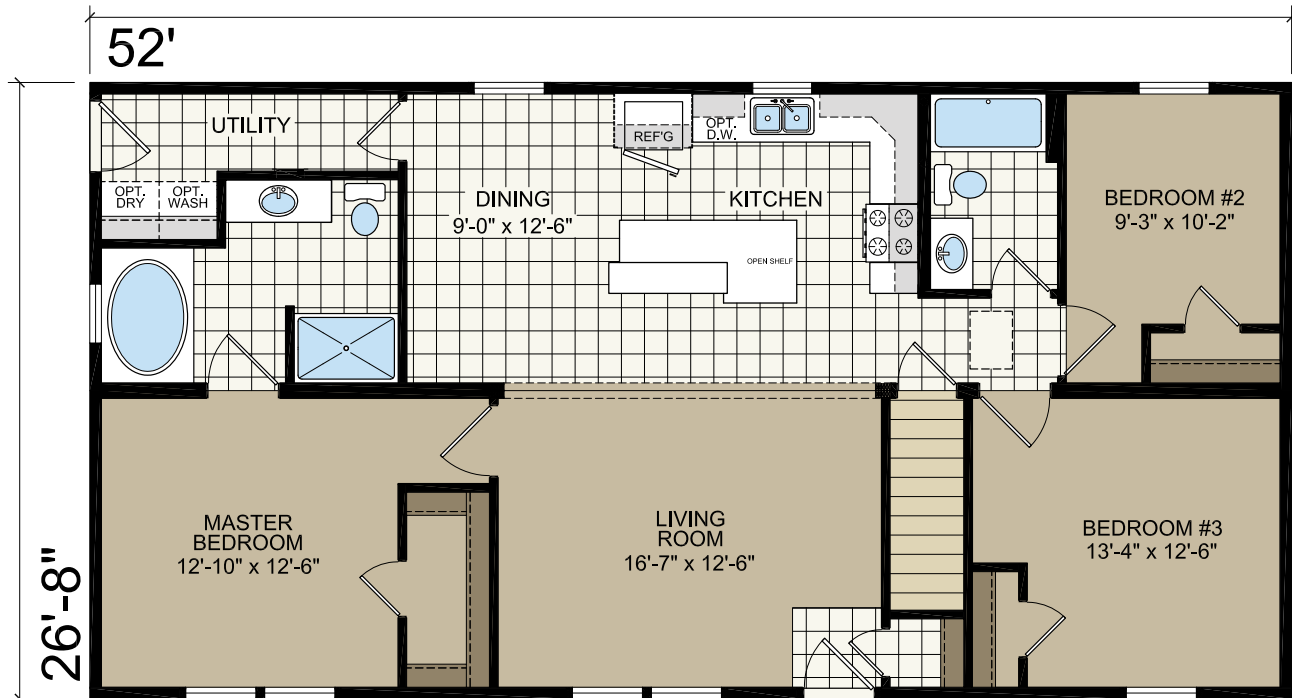


A95252 RANCH

28' x 52'
3 bed-2 bath
1387 sq. ft.



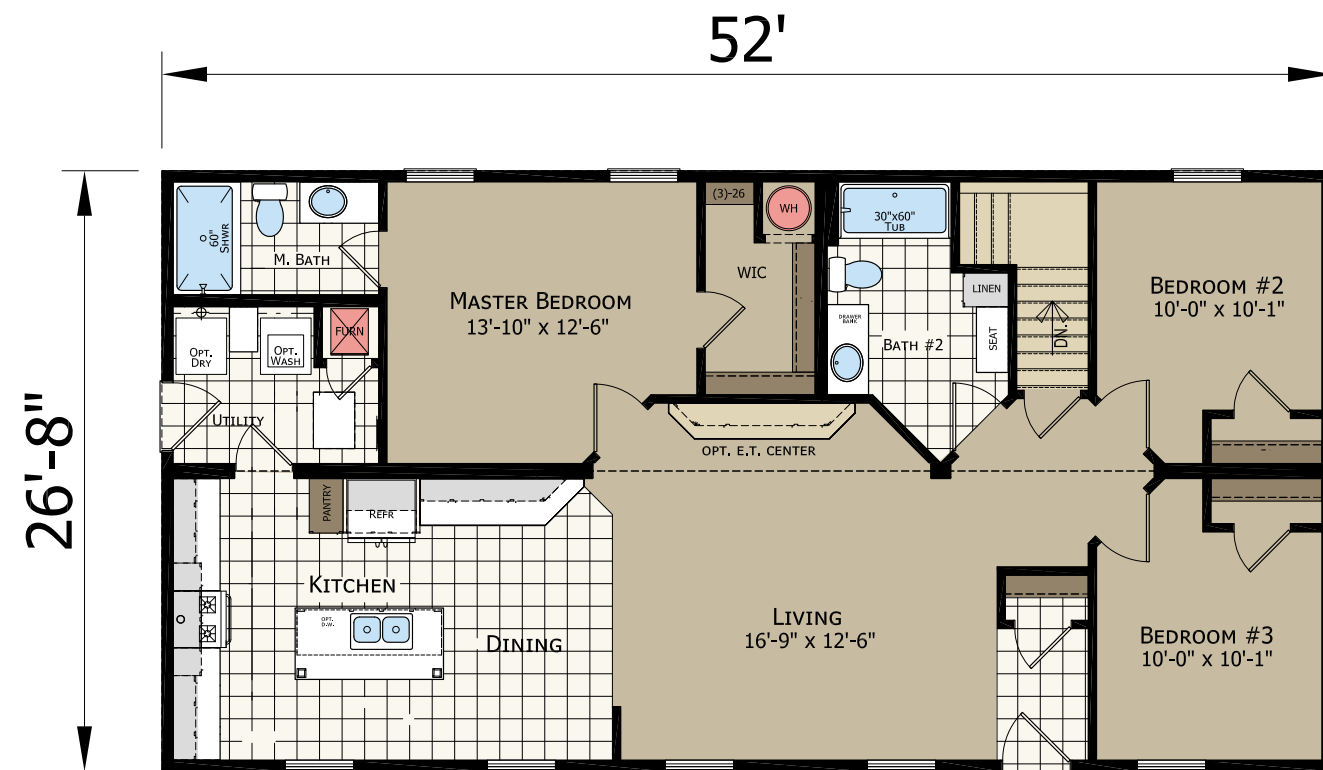
OPTIONAL FURNACE/WATER HEATER



STD PLAN

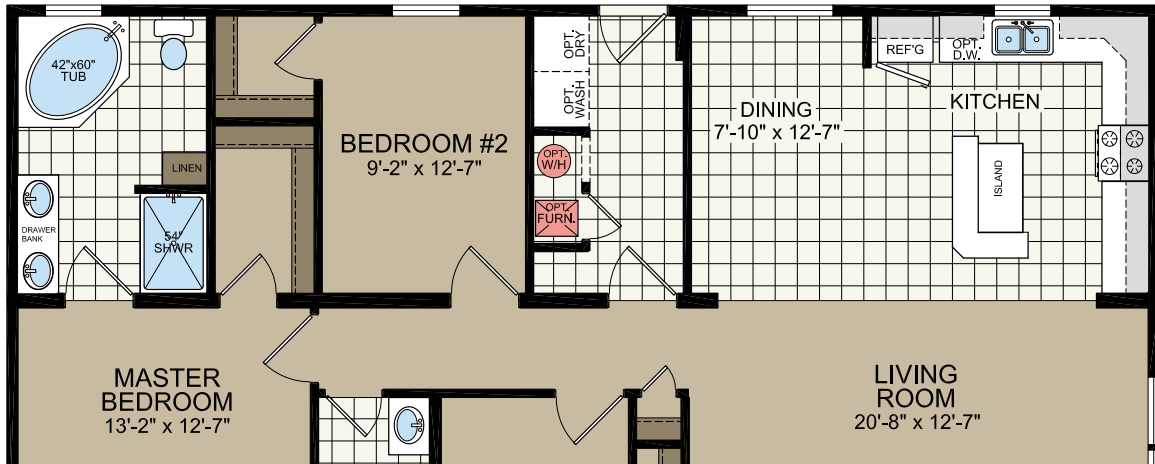
A95278 Ranch

28' x 52'
3 bed-2 bath
1387 sq. ft.

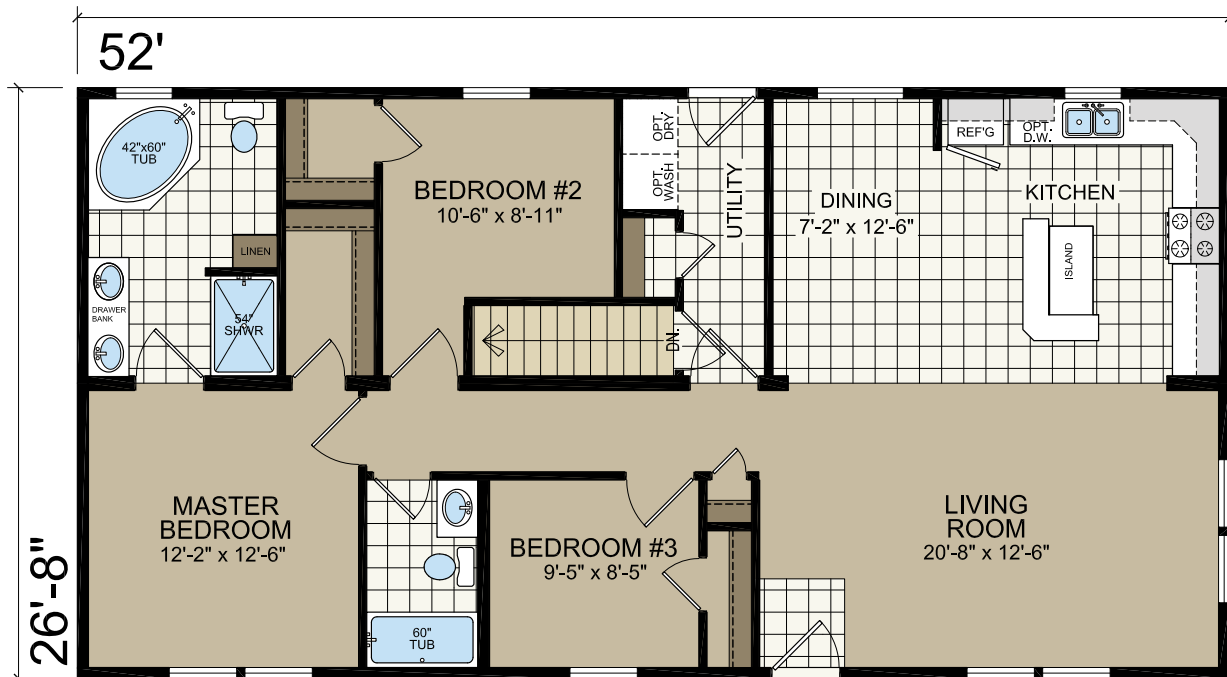


A95231 RANCH

28' x 52'
3 bed-2 bath
1387 sq. ft.



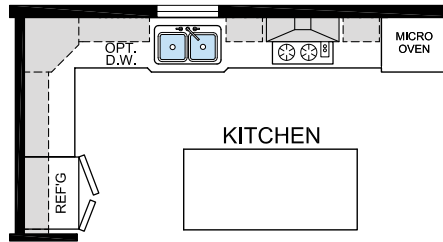
OPTIONAL FURNACE/WATER HEATER
OMIT STAIRWAY ACCESS



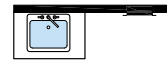
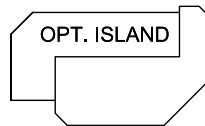
STD PLAN

A95678 RANCH

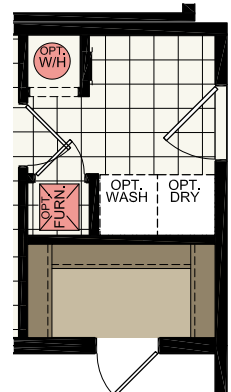
28' x 56'
3 bed-2 bath
1493 sq. ft.



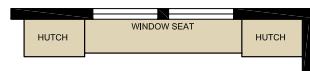
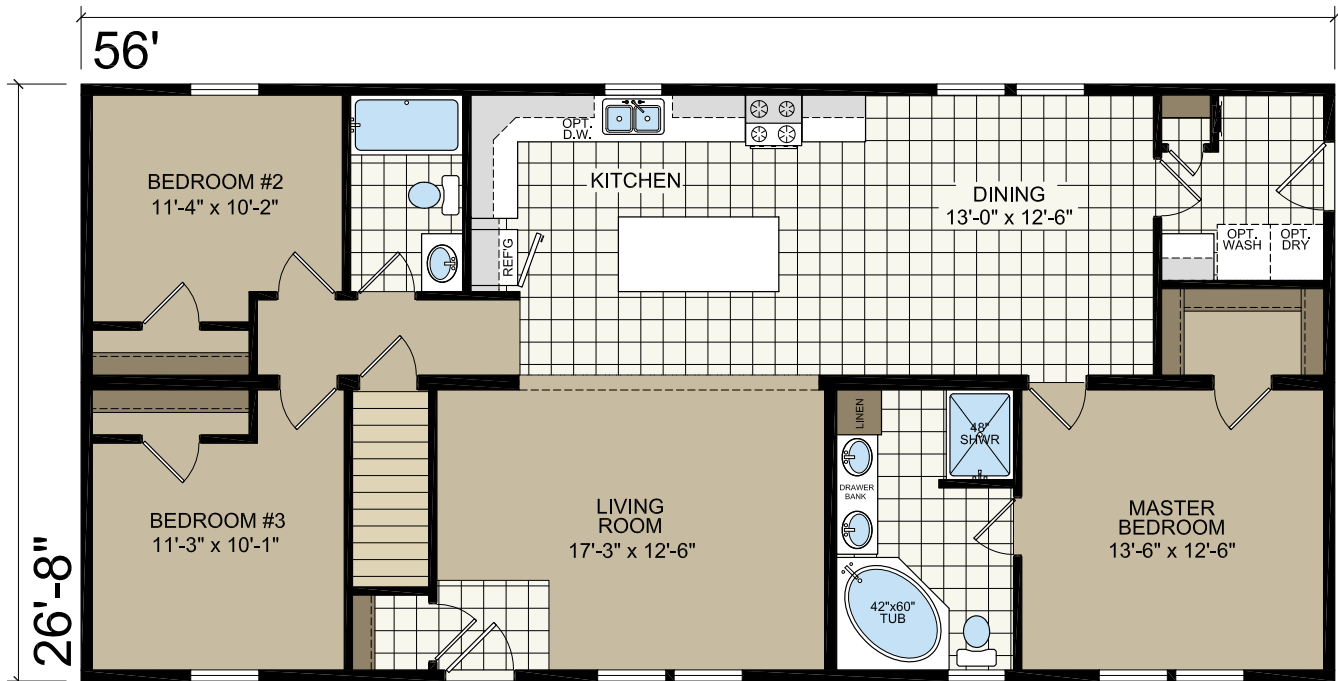
OPT. ULTIMATE KITCHEN



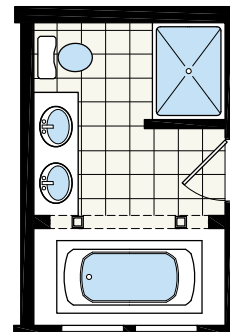
OPT. UTILITY SINK



OPTIONAL
FURNACE AND
WATER HEATER



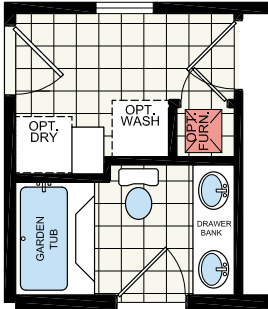
DINING
12'-11" x 10'-9"
OPT. WINDOW SEAT



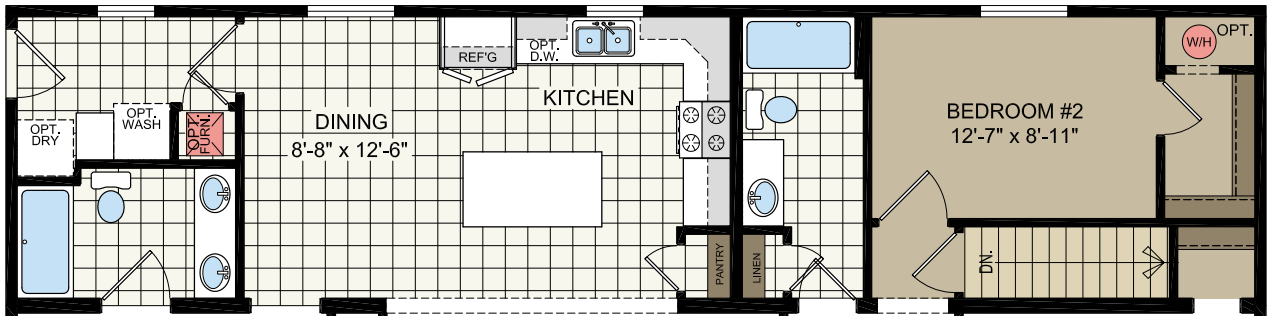
OPT. MASTER BATH

A95652 RANCH

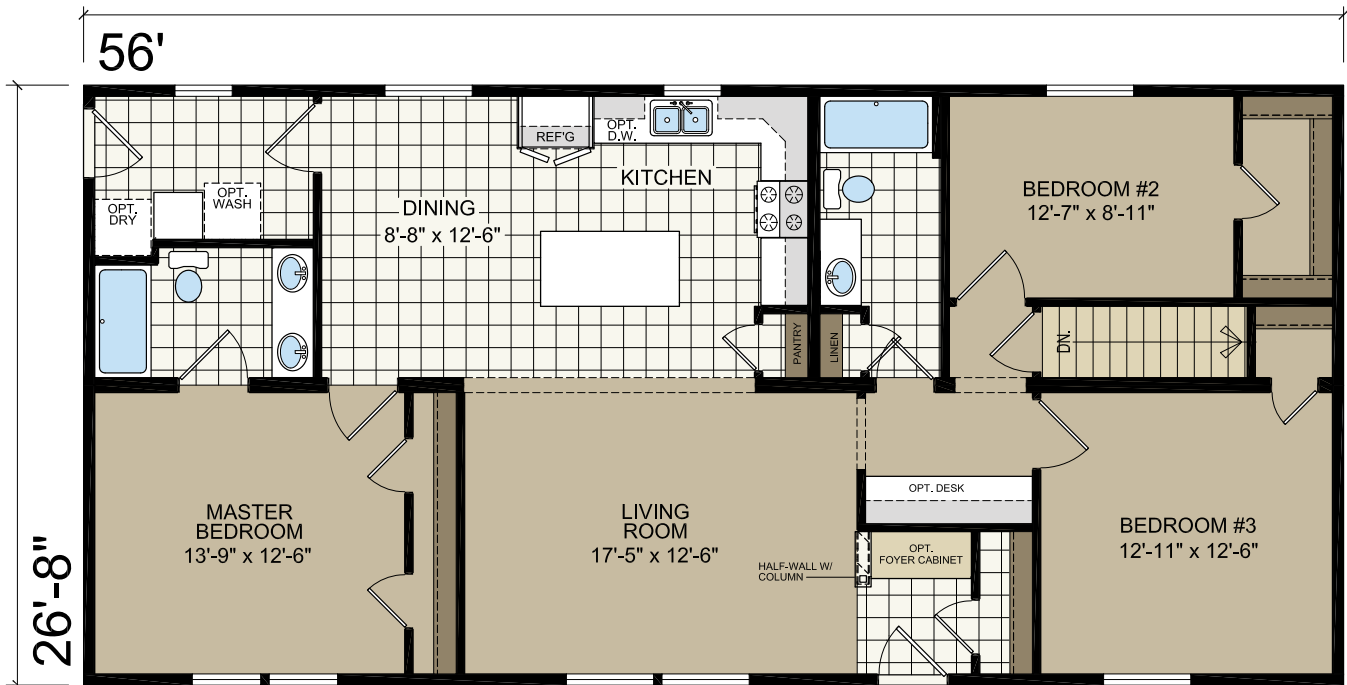
28' x 56'
3 bed-2 bath
1493 sq. ft.



OPT.
GARDEN TUB

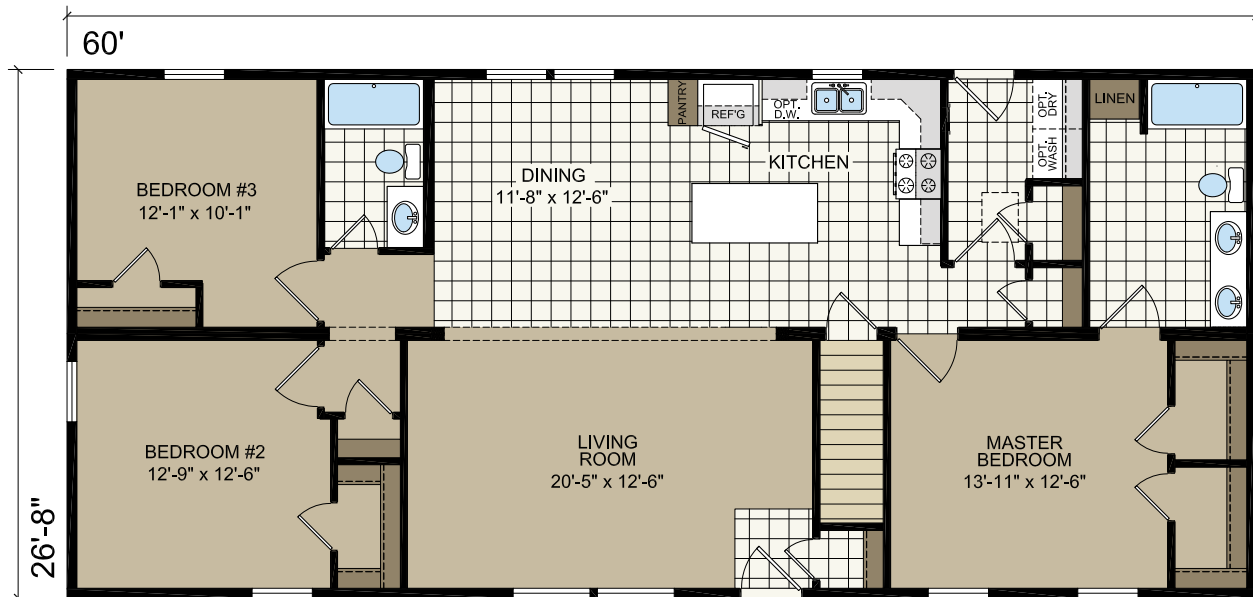


OPTIONAL
FURNACE & WATER HEATER



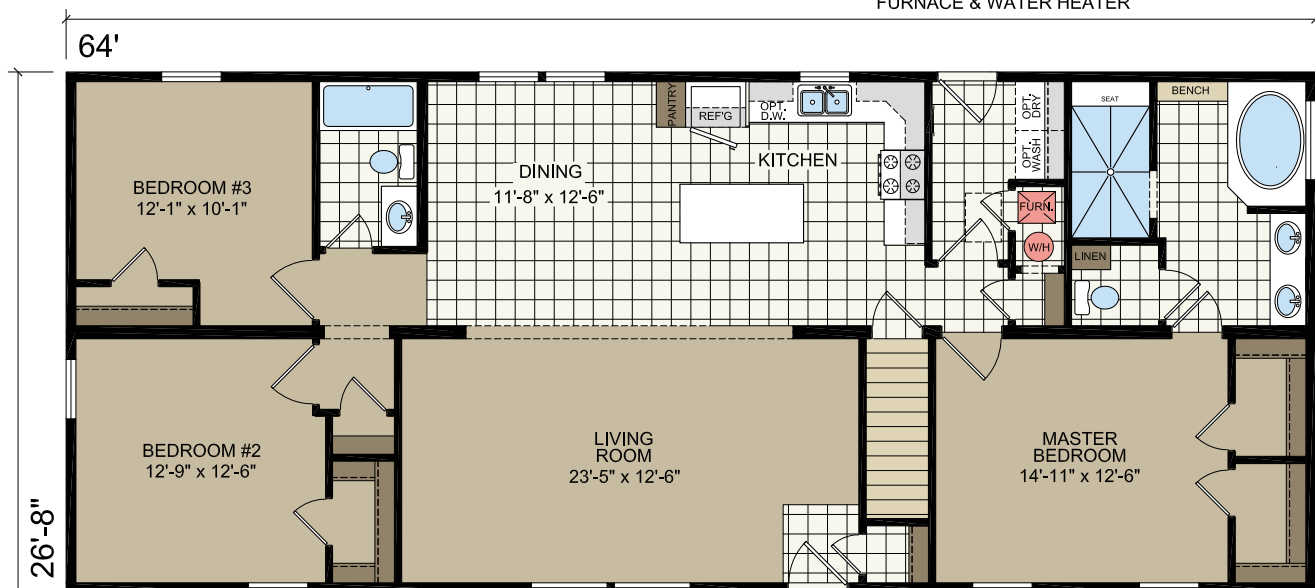
A96051 RANCH

28' x 60'
3 bed-2 bath
1600 sq. ft.



STANDARD PLAN

SHOWN WITH
OPTIONAL
FURNACE & WATER HEATER



OPTIONAL 64'
AMAZON BATH

28' x 64'
1706 sq. ft.

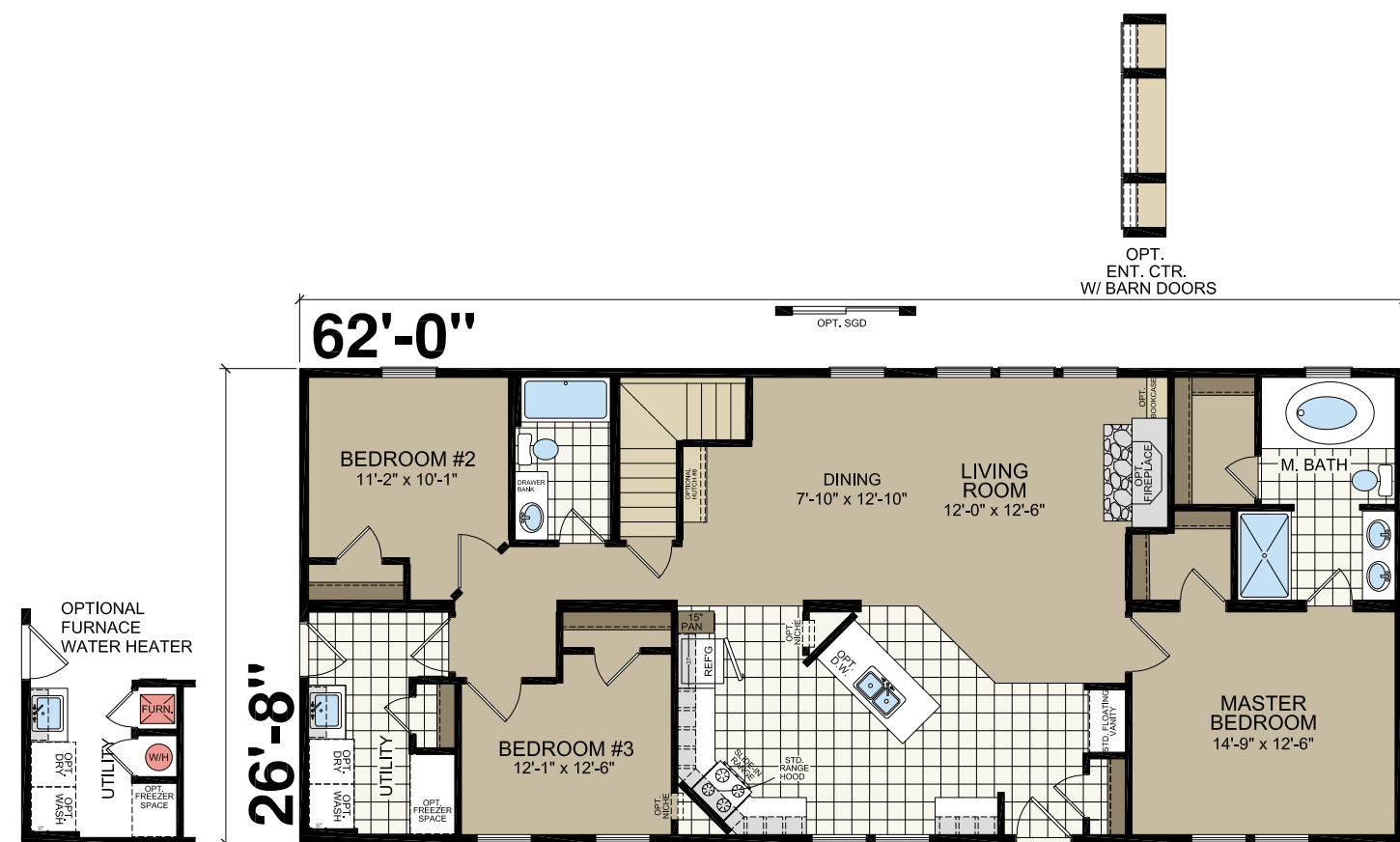
A96278 RANCH

28' x 62'
3 bed-2 bath
1653 sq. ft.



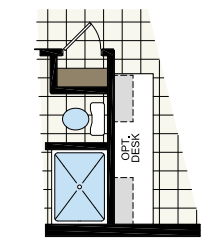
SHOWN WITH OPTIONAL EXTERIOR ELEVATION

A96278 RANCH

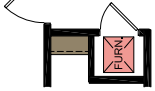
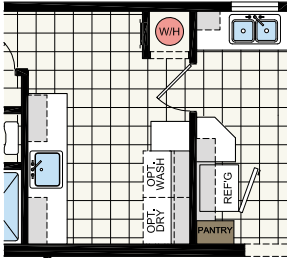


A96651
RANCH

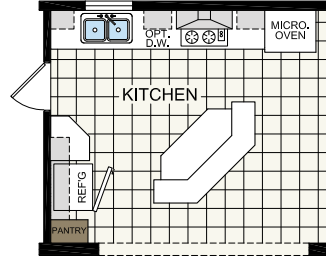
28' x 66'
3 bed-2 bath
1760 sq. ft.



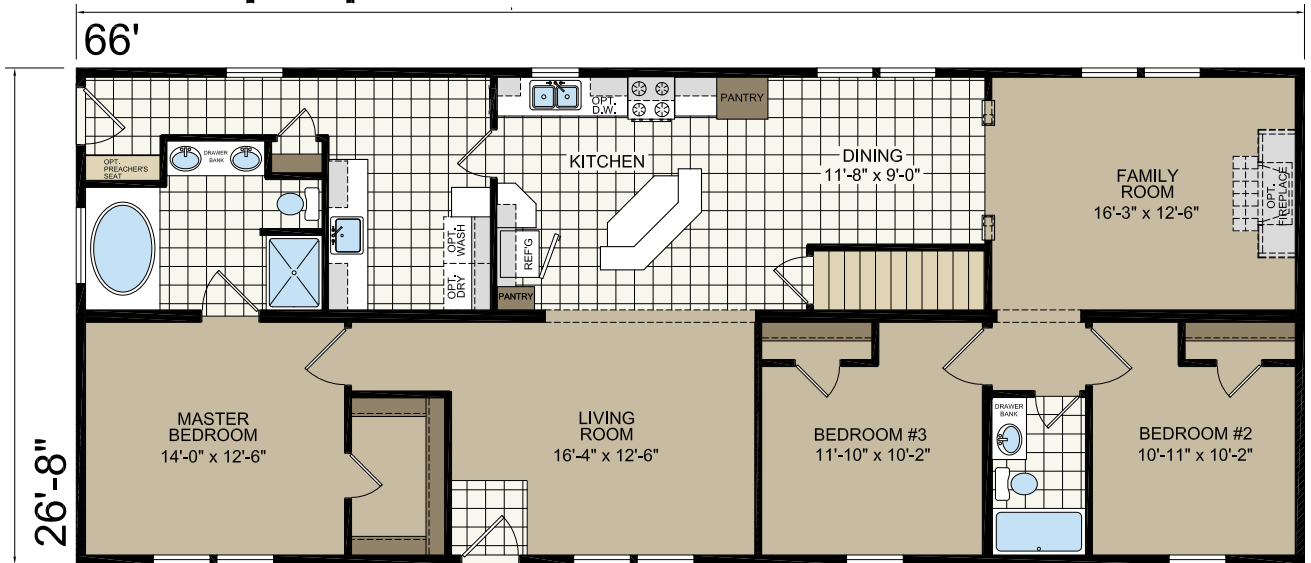
OPT. COMPUTER DESK



OPTIONAL
FURNACE AND
WATER HEATER

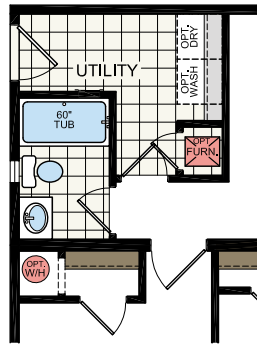


OPT. ULTIMATE KITCHEN

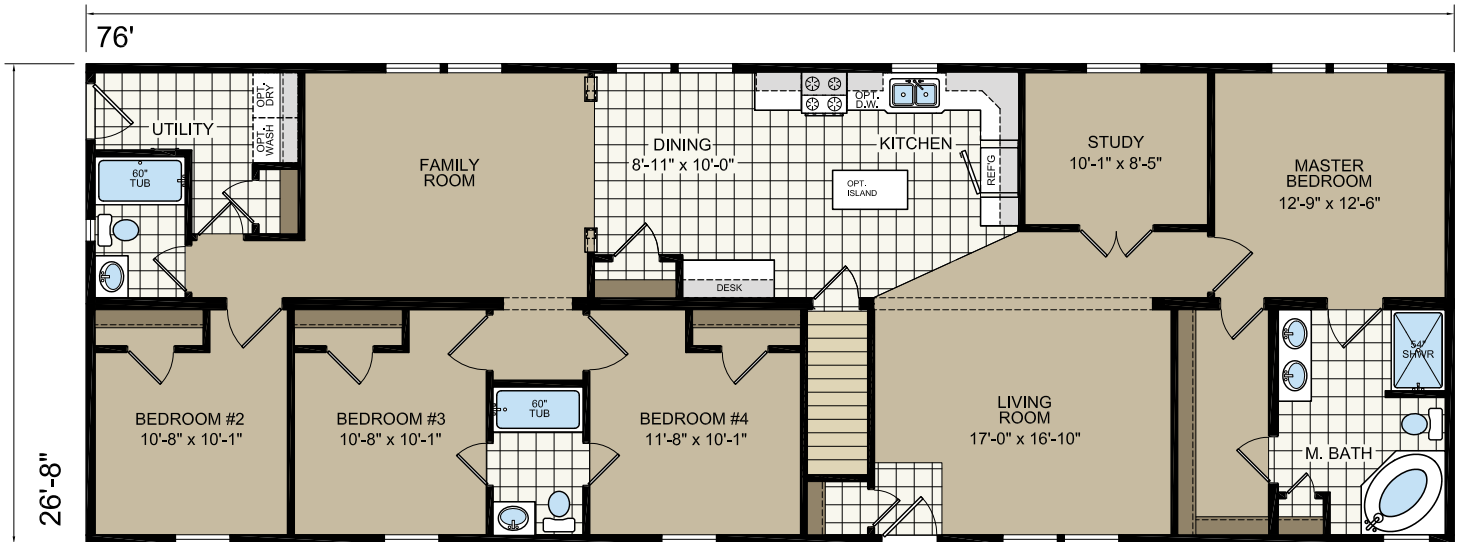


A97677 RANCH

28' x 76'
4 bed-3 bath
2026 sq. ft.



OPTIONAL FURNACE AND WATER HEATER



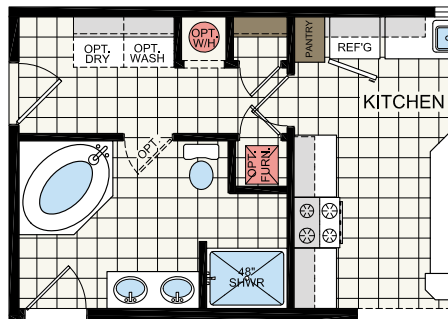
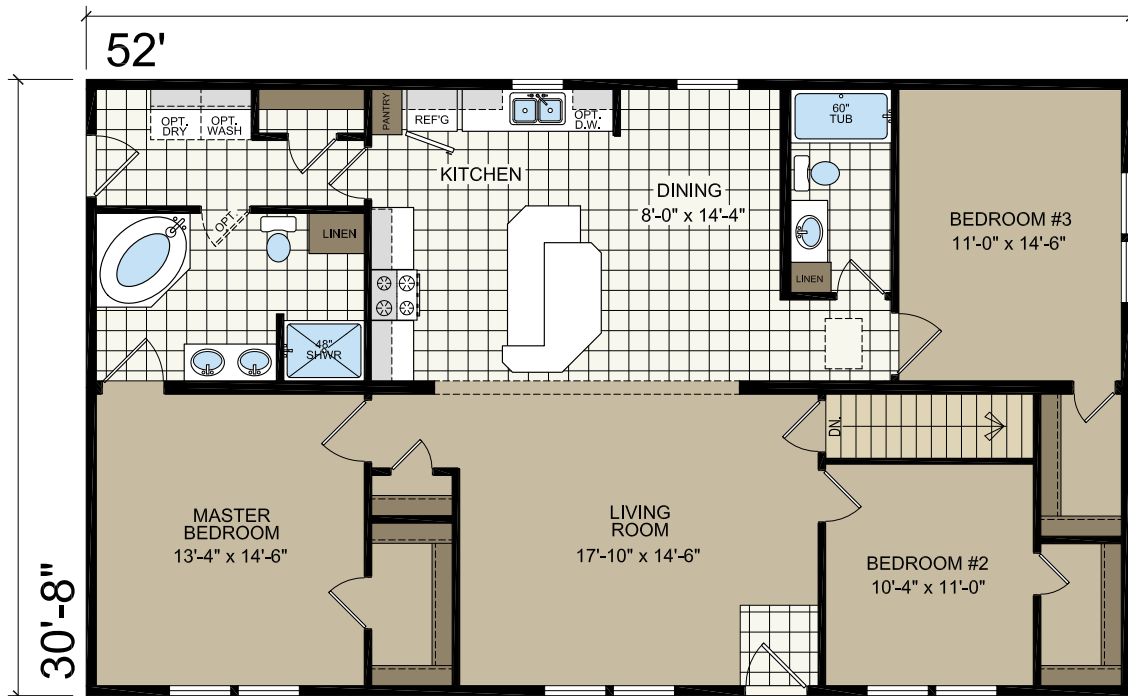
E94879
RANCH

32 x 48'
3 bed-2 bath
1472 sq. ft.

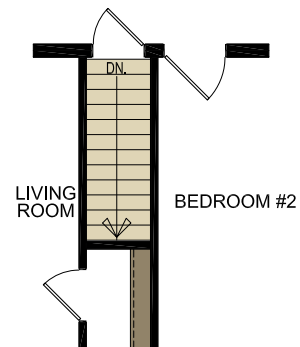


E95279 RANCH

32' x 52'
3 bed-2 bath
1595 sq. ft.



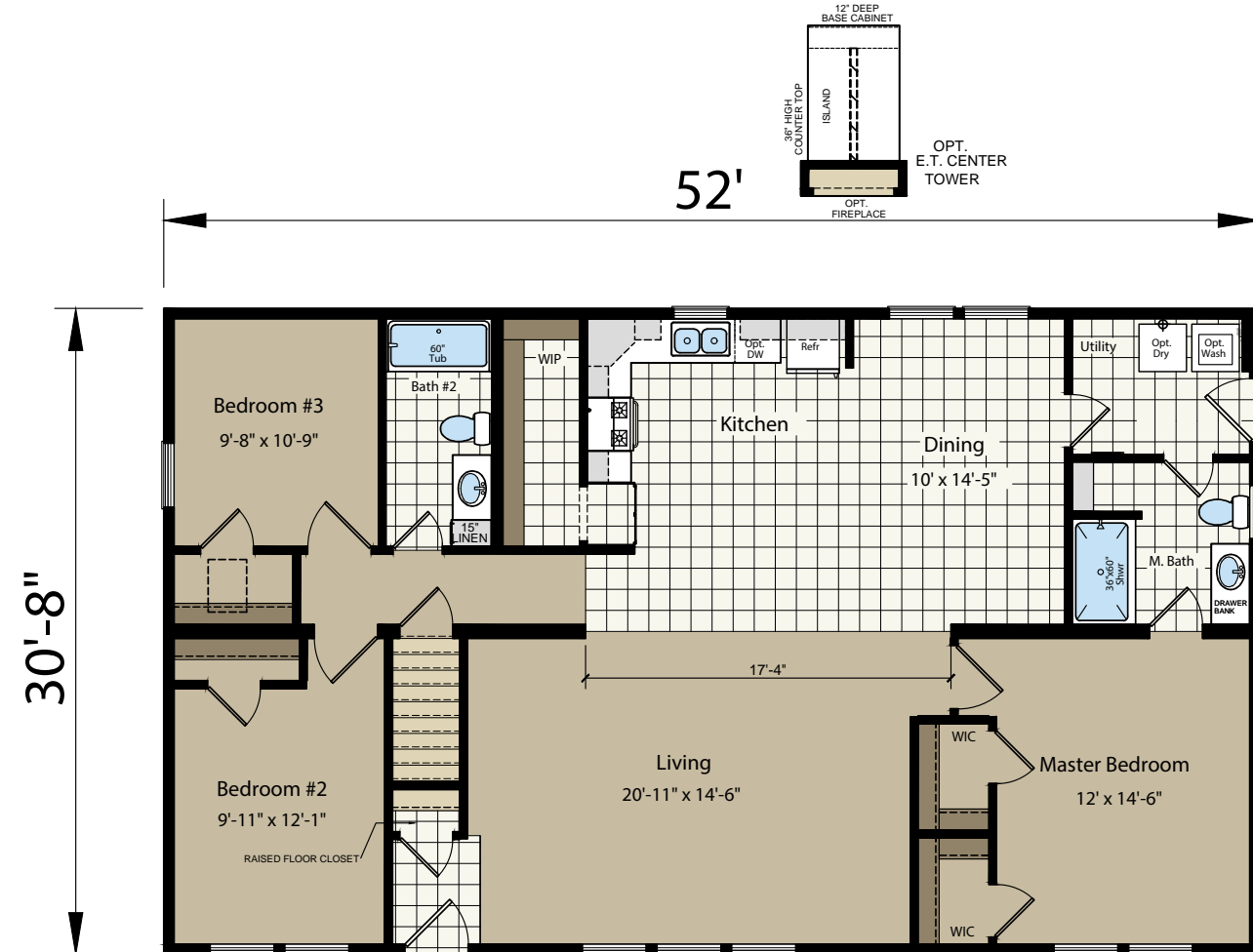
OPTIONAL FURNACE AND WATER HEATER



TRANSVERSE STAIRWAY ACCESS
REQUIRES A 4' STRETCH TO 56"

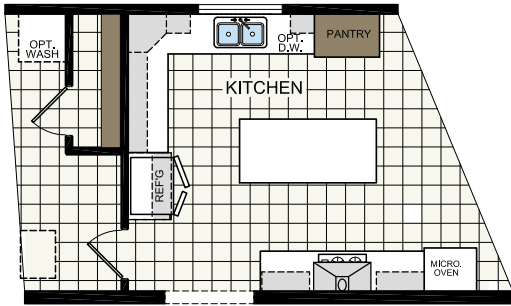
E95285 RANCH

32' x 56'
3 bed-2 bath
1595 sq. ft.

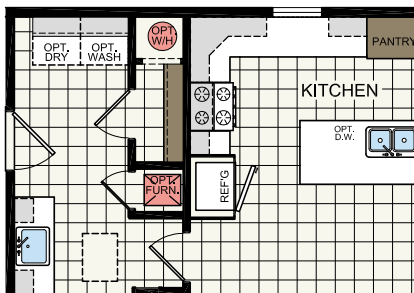
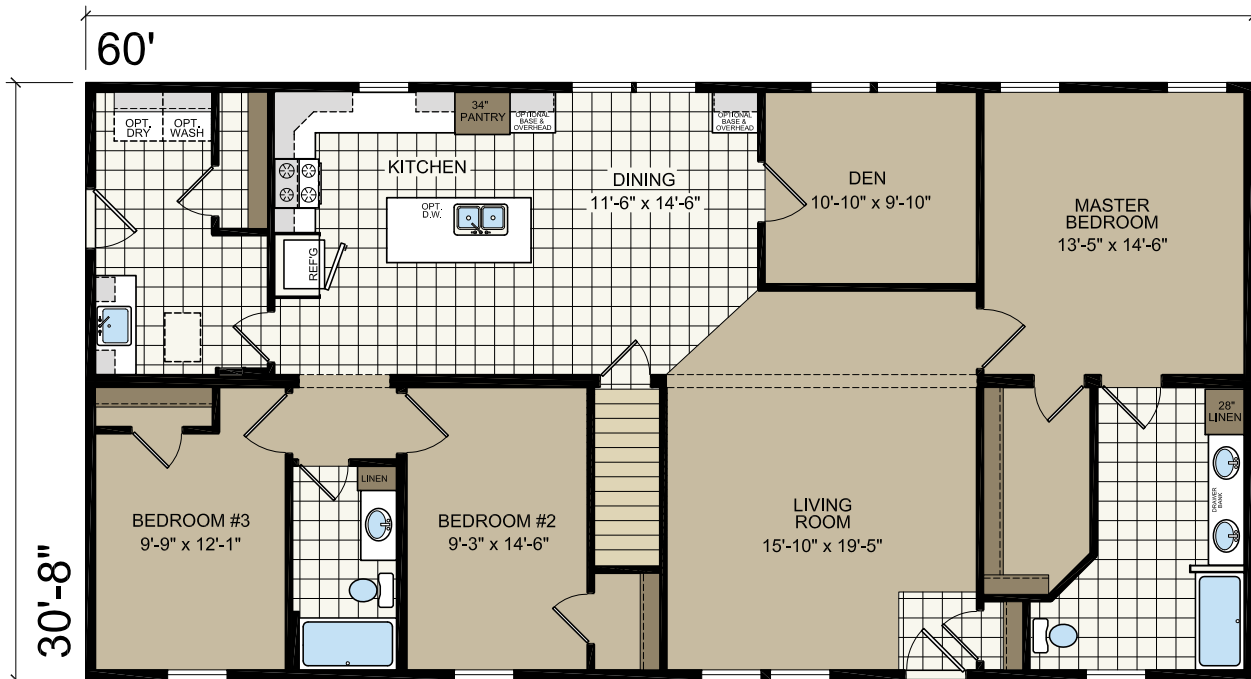


E96081 RANCH

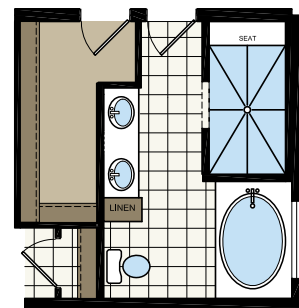
32' x 60'
3 bed-2 bath
1840 sq. ft.



OPT. ULTIMATE KITCHEN



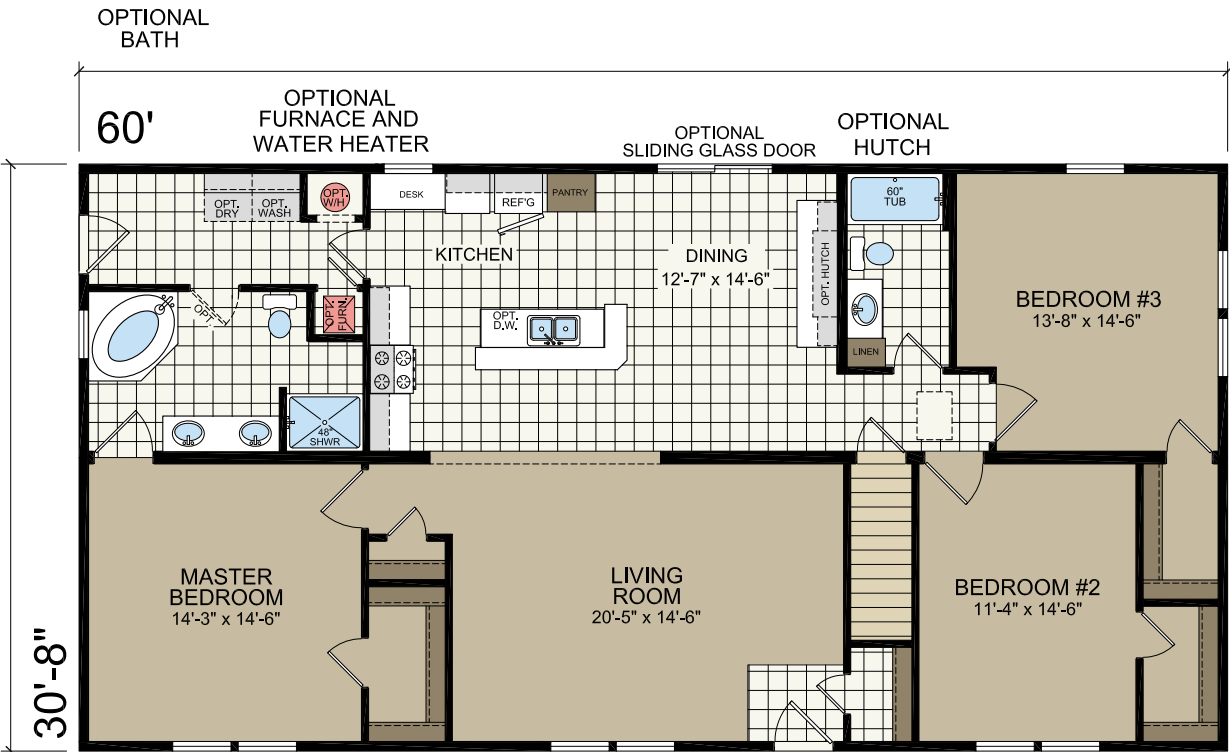
OPT. FURNACE
AND WATER HEATER



OPTIONAL
MODIFIED AMAZON BATH

E96078
RANCH

32' x 60'
3 bed-2 bath
1840 sq. ft.



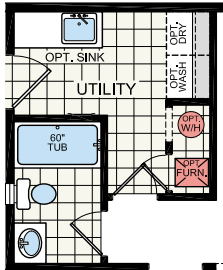
OPTIONS

32' x 66'
4 bed-2 bath
2024 sq. ft.

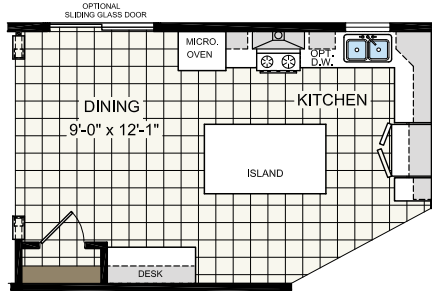


E97677 RANCH

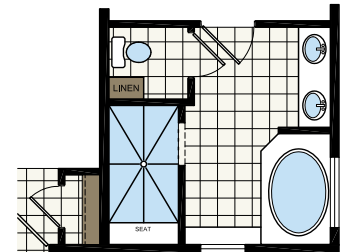
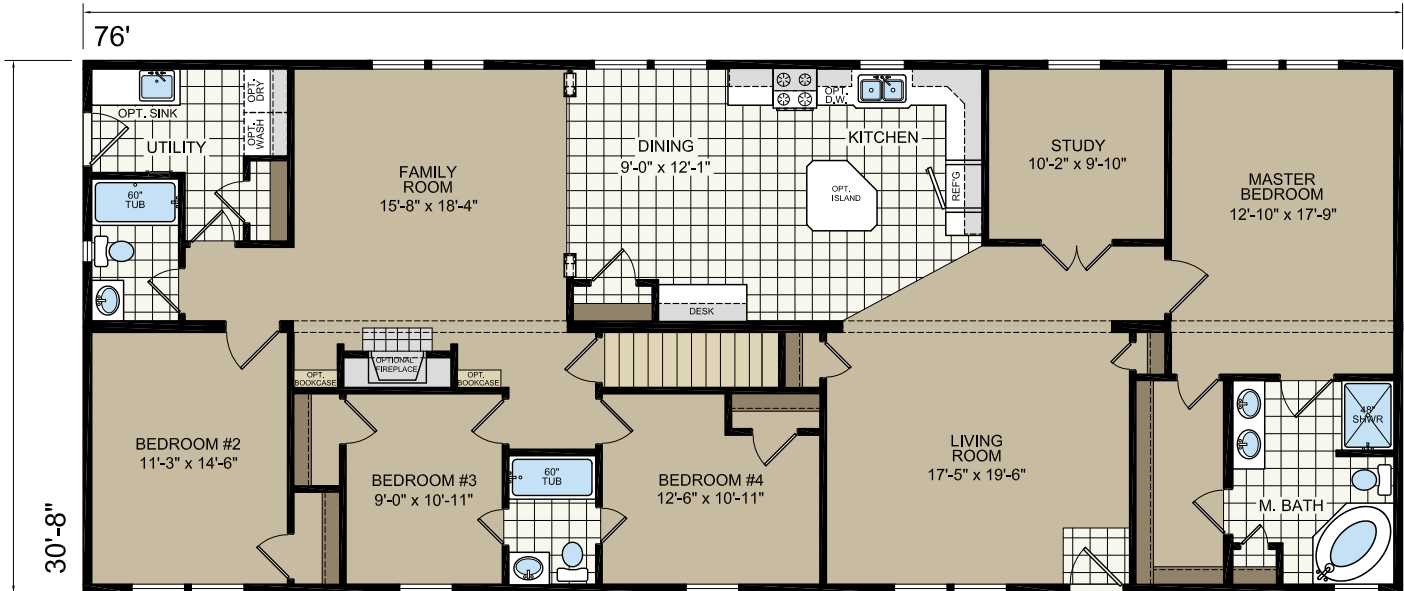
32' x 76'
4 bed-3 bath
2331 sq. ft.



OPTIONAL FURNACE
AND WATERHEATER



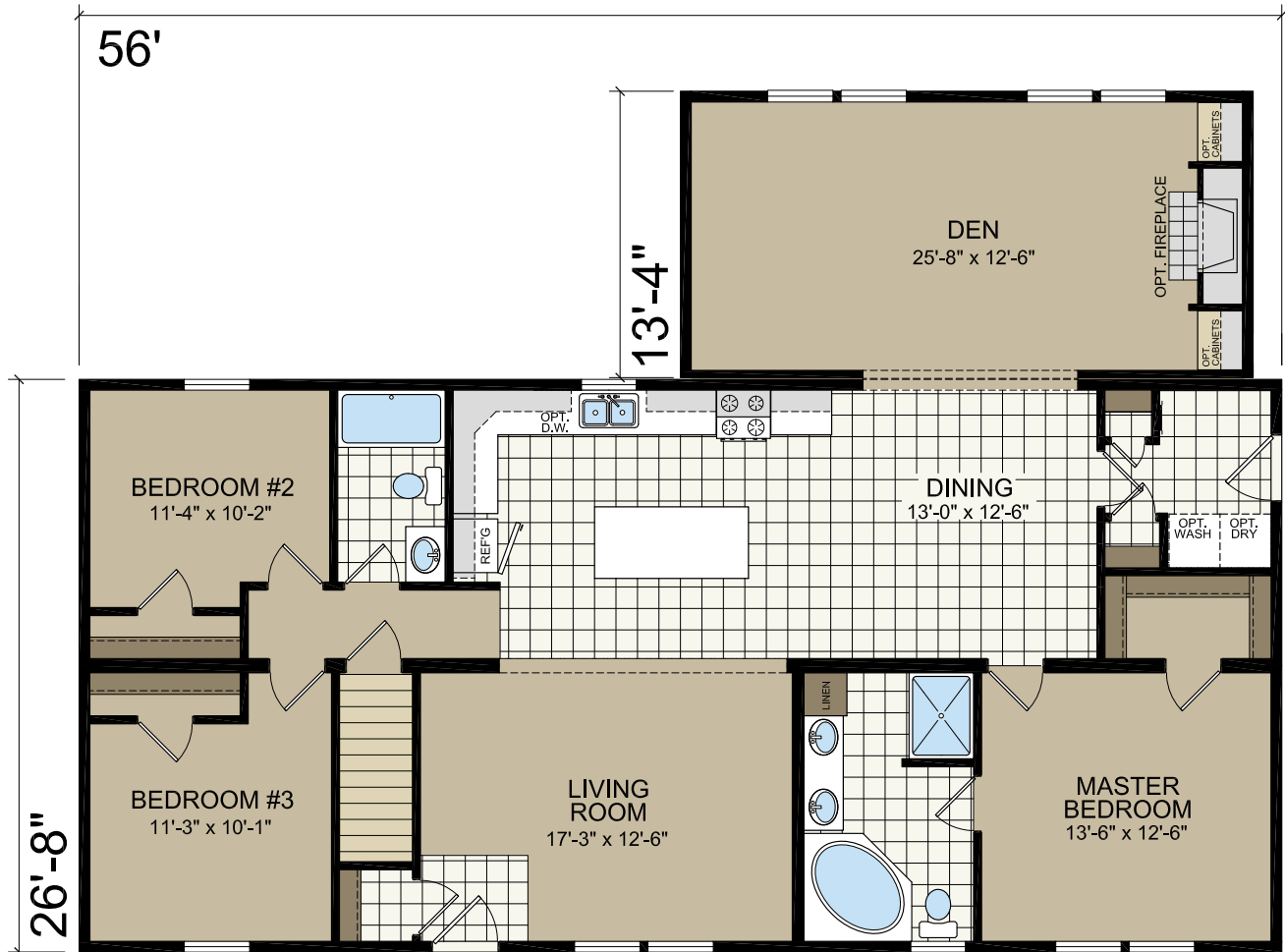
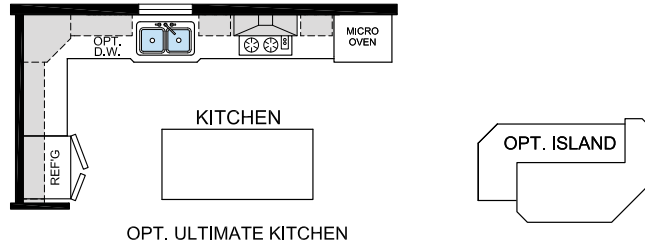
OPTIONAL ULTIMATE KITCHEN



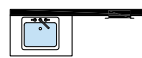
OPTIONAL BATH

A95678T T-RANCH

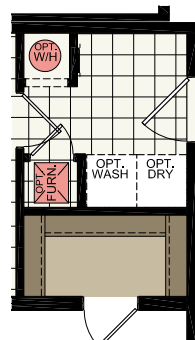
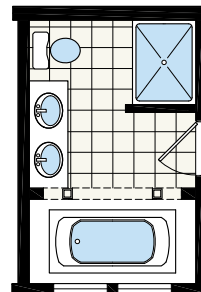
40' x 56'
3 bed-2 bath
1852 sq. ft.



DINING
12'-11" x 10'-9"
OPT. WINDOW SEAT

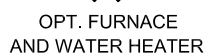


OPT. UTILITY SINK



OPTIONAL
FURNACE AND
WATER HEATER

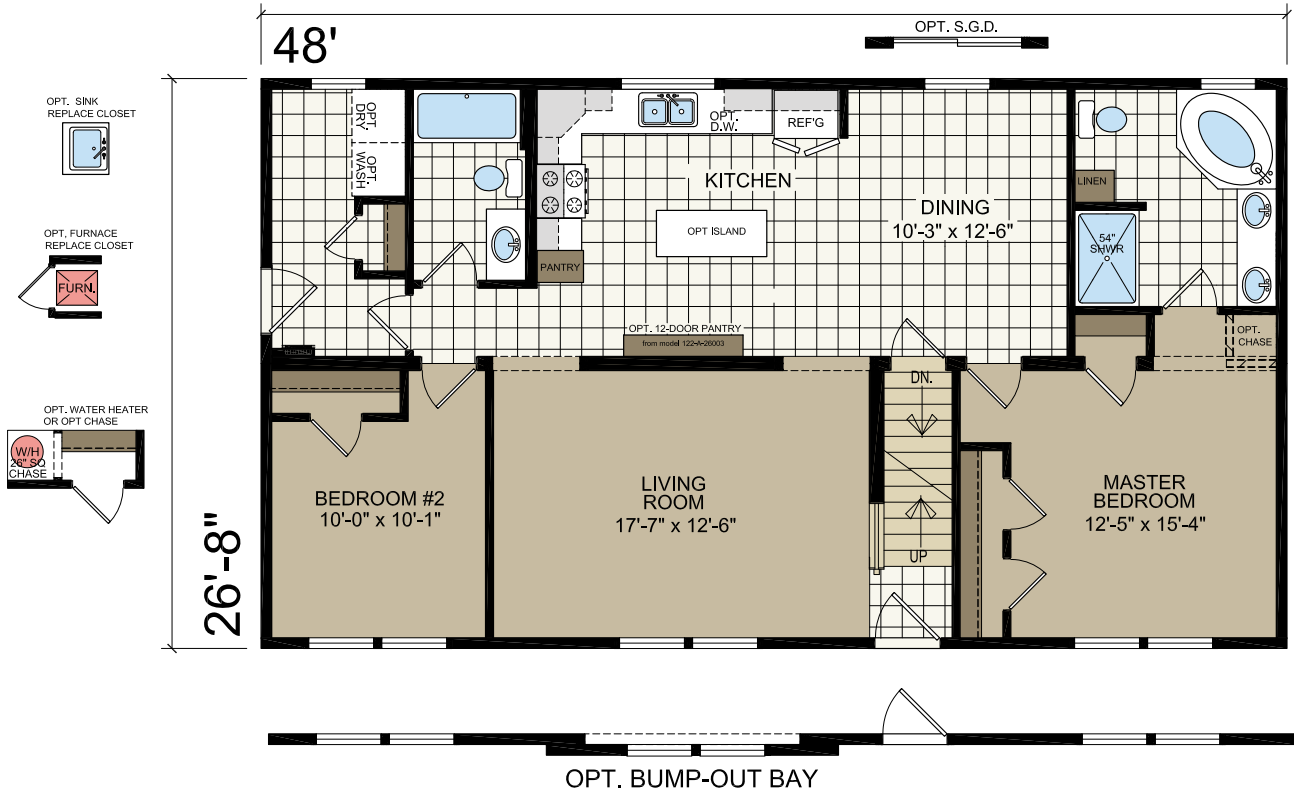
40' x 64'
3 bed-2 bath
1957 sq. ft.



A94886

CAPE COD

28' x 48'
2 bed-2 bath
1280 sq. ft.



STANDARD FEATURES

CONSTRUCTION

- 2x10 Floor Joists 16" O.C. with Double Perimeter Joist
- Tongue & Groove OSB Floor Decking
- 2X6 Sidewalls 16" O.C. | 2x4 Interior Walls
- 40 lb Roof 24" O.C. with OSB Decking
- 8' Sidewalls | 5/12 Flat with Overhangs 12" Gable Ends – 6" Front/Rear | Ice Guard
- Smooth Ceilings
- Basement Access
- 7/16" OSB Sheathing with House Wrap
- R-24 Sidewall Insulation | R-49 Roof Insulation
- Marriage Line Gasket | 3-Pc Soffit/Fascia
- ½" Drywall Throughout Including Closets
- Upgraded Molding Throughout | 5.25" Crown |
- Double 4" Dutch Lap Exterior Vinyl Siding
- Deluxe Raised Panel Shutters FDS
- Architectural Shingles with Ridge Vent
- 38" x 82" Sunburst Fiberglass Front Door – No Storm
- 36" x 82" 9-Lite Fiberglass Rear Door - No Storm
- Deadbolts on Exterior Doors | Keyed Alike
- Argon Gas filled Low-E Gridded Windows Per Plan | Window Sills
- 36" 2-panel White Interior Doors - Where Applicable

ELECTRIC

- 200 Amp Electric Service
- GFIs in Kitchen & Baths
- LED Can Lights in Bedrooms
- Vanity Light in Bathrooms
- Fan Prep with Switch in Living Room
- USB Charger in Kitchen
- Deluxe Chandelier in Dining Room
- Exterior Brushed Nickel Coach Lights
- Wireless Door Chimes
- Wire & Vent for Electric Dryer
- Wire for Electric Range

PLUMBING & HEATING

- Programmable Thermostat
- Boots & Registers Installed
- Exterior Faucet
- Plumbing & Gas Lines Stubbed
- Water Shut-Offs at Fixtures
- Radon Vent Pipe
- 1 Exterior Water Hook-up
- Foam Pipe Insulation on ¾" Water Lines

KITCHEN

- 8" SS Deep-Well Kitchen Sink | Single-Lever Faucet with Pull-out Spray Head
- Power Vent Range Hood
- Cabinet Pulls
- Residential Drawer Guides | Bar Pulls
- Laminate Countertop with Crescent Edge & 3" Ceramic with 3" Glass Backsplash
- Wood Cabinet Doors | Solid Wood Stiles | Hidden Hinges | Under Cabinet Molding
- Drawer Over Door Cabinet Construction (Full Extension Drawer Guides)
- Crown Molding on 41" Overheads - 36" Doors with Bump-Outs Per Print
- Two Adjustable Shelves in Overhead Cabinets

BATHS

- 60" 1-Piece Fiberglass Tub/Shower
- Single-Lever Anti-scald Faucets
- 4-Cycle Shower Heads
- Towel Ring & Tissue Holders
- 36" Vanity Height
- Porcelain Sinks
- Mirror with Frame at Vanity(s)
- Laminate Countertop with Crescent Edge & 3" Ceramic with 3" Glass Backsplash
- 1.3 Gallon Toilets
- Tub Overdrape

MISCELLANEOUS

- Combo Smoke/CO Detectors Per Code
- Rebond Pad | 25 oz Shaw® Carpet
- Linoleum in Wet Areas & Vinyl Foyer
- Vented Shelves in Closets & Washer/Dryer Area
- 2" Faux Blinds Throughout
- Whole House Ventilation Fan
- R-49 Insulated/Gasketed Ceiling Hatch Cover

Due to continuous product development and improvement, prices, specifications, and materials are subject to change without notice or obligation. Square footage and other dimensions are approximate. Exterior images may be artist renderings and are not intended to be an accurate representation of the home. Renderings, photos and floor plans may be shown with optional features or third-party additions.



ATLANTIC[®] HOMES

2551 Champion Drive
Claysburg, PA 16625

atlantichomespa.com

CHAMPION[®]
HOME BUILDERS