

ESSENTIALS

MULTI-SECTION



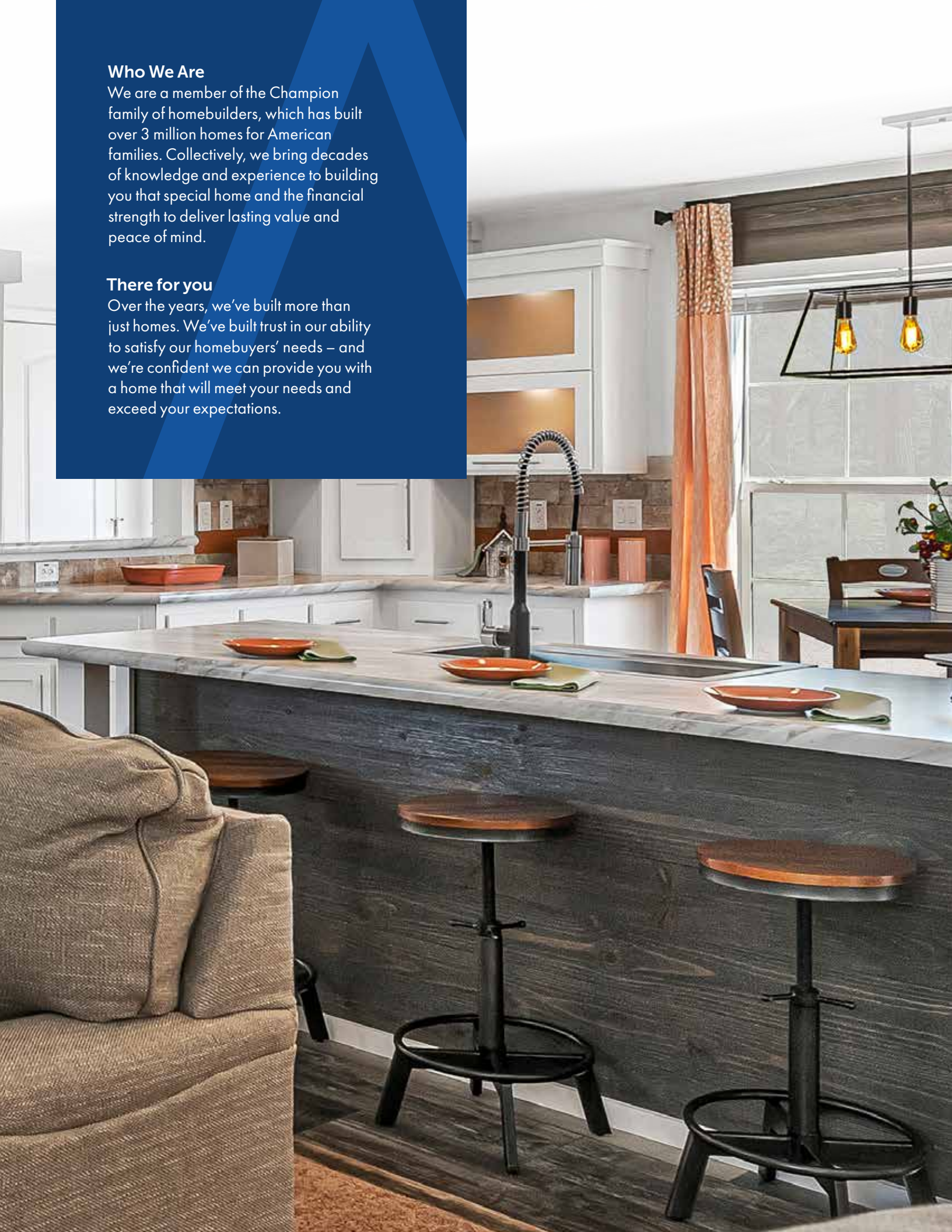
ATLANTIC[®]
HOMES

Who We Are

We are a member of the Champion family of homebuilders, which has built over 3 million homes for American families. Collectively, we bring decades of knowledge and experience to building you that special home and the financial strength to deliver lasting value and peace of mind.

There for you

Over the years, we've built more than just homes. We've built trust in our ability to satisfy our homebuyers' needs – and we're confident we can provide you with a home that will meet your needs and exceed your expectations.

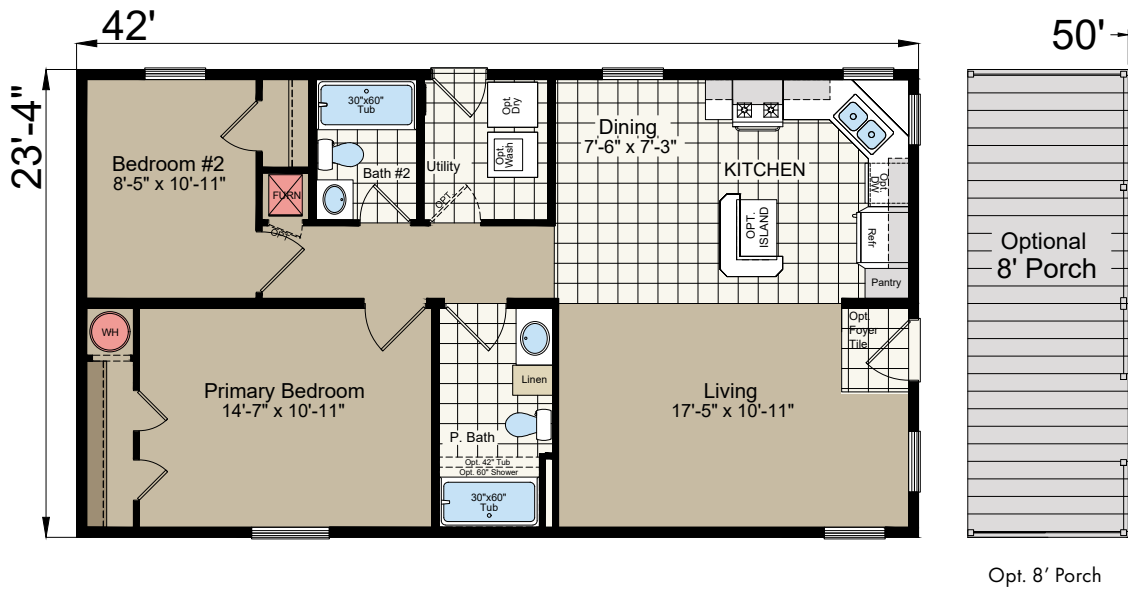




ATLANTIC[®]
HOMES

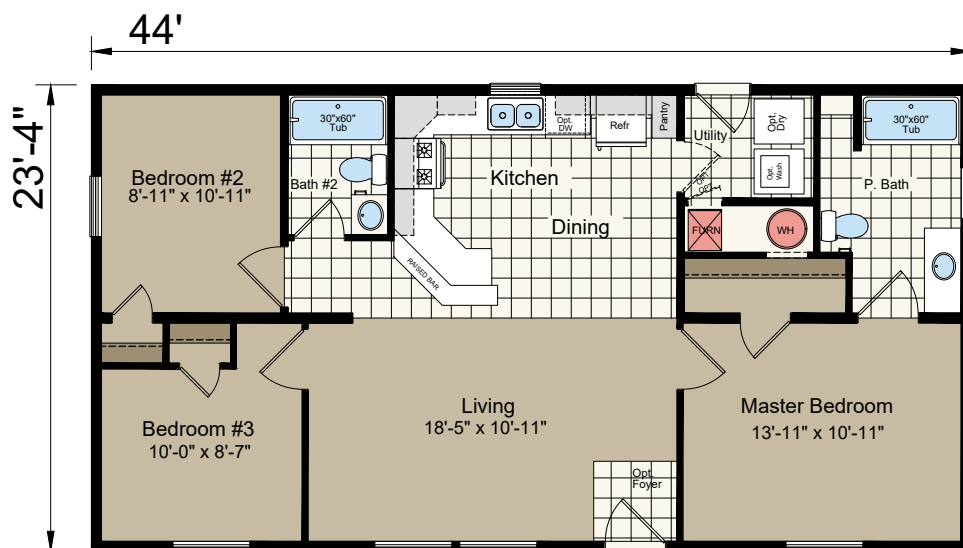
B24201

2 bed-2 bath
980 sq. ft.



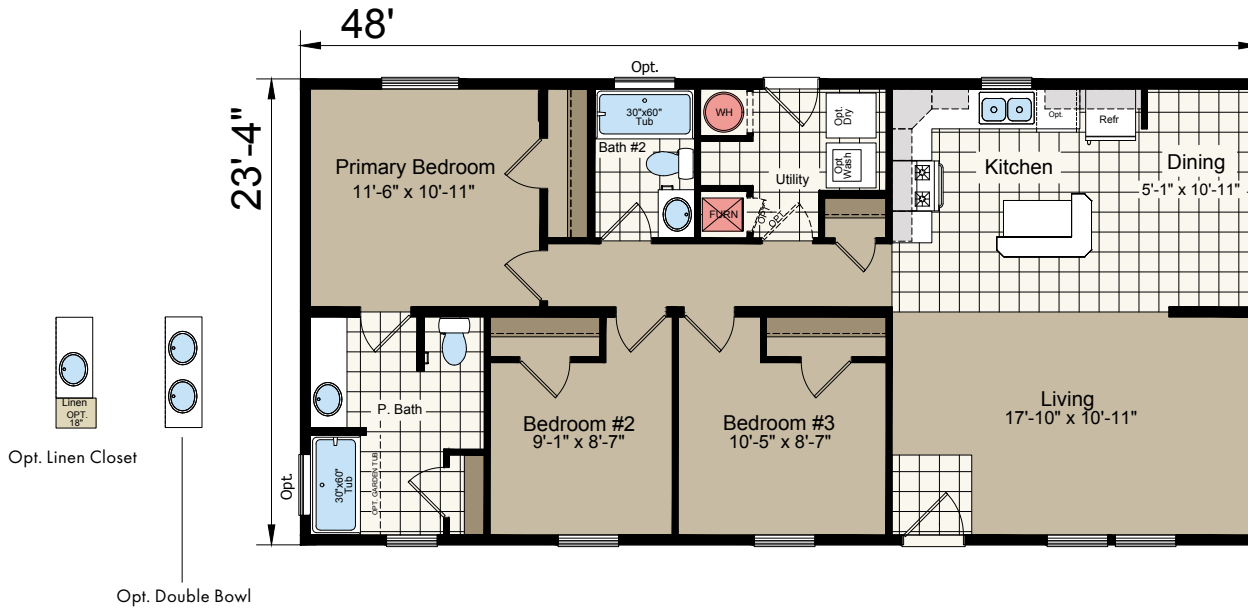
B24401

3 bed-2 bath
1027 sq. ft.



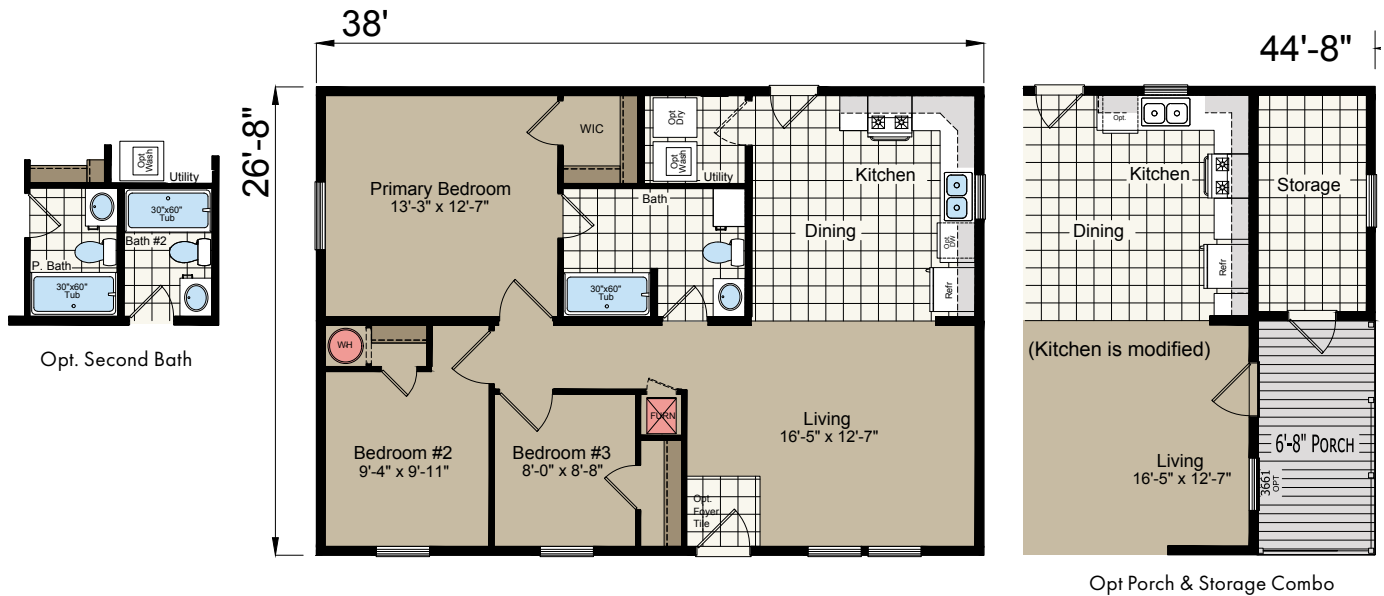
B74852

3 bed-2 bath
1120 sq. ft.



A23801

3 bed-1 bath
1013 sq. ft.

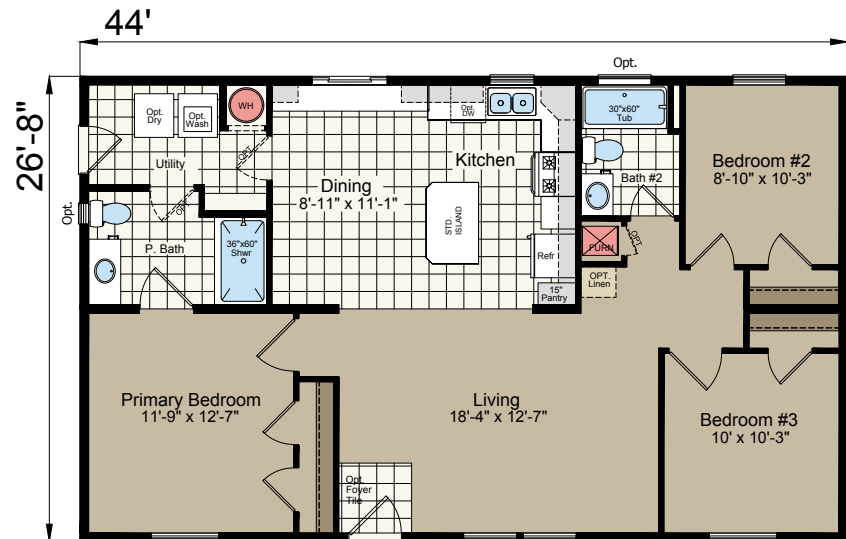






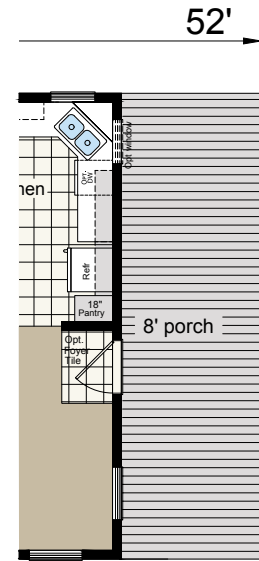
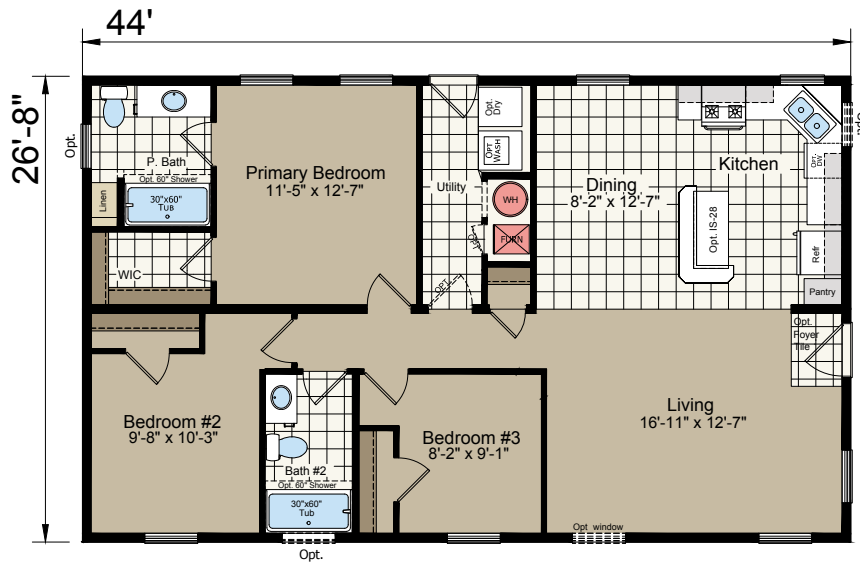
A24402

3 bed-2 bath
1173 sq. ft.



A24403

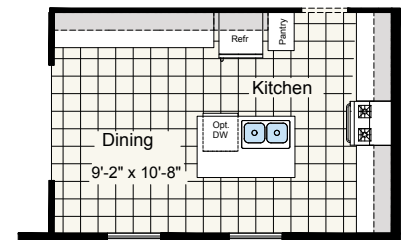
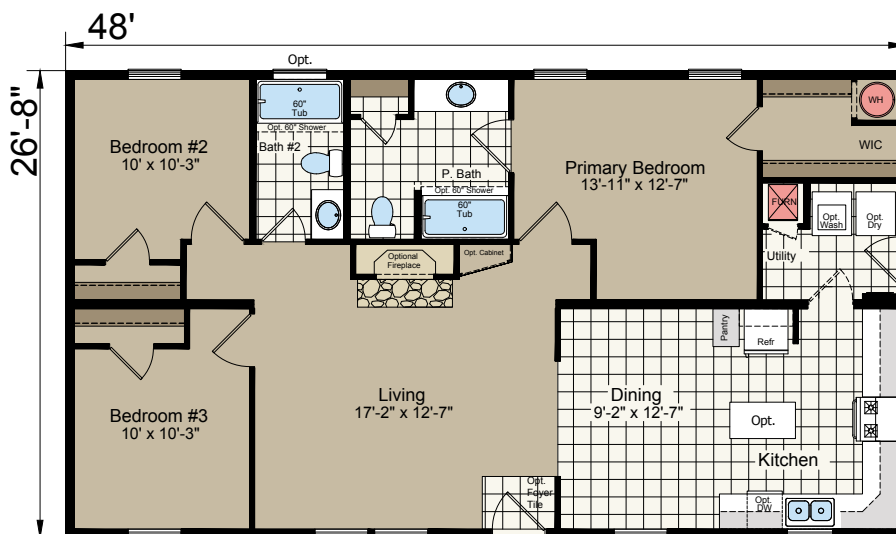
3 bed-2 bath
1173 sq. ft.



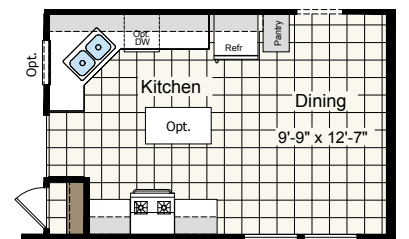
Opt. 8' Porch

A44830

3 bed-2 bath
1280 sq. ft.



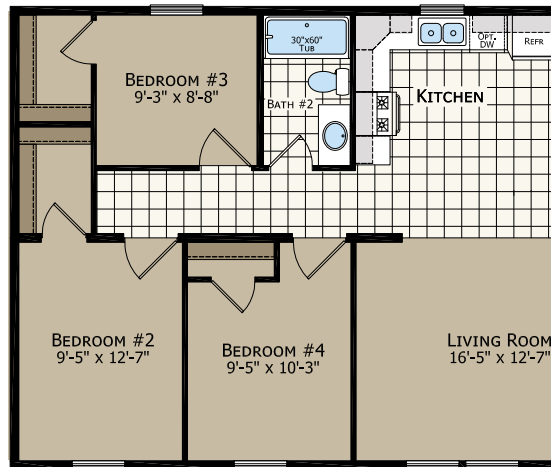
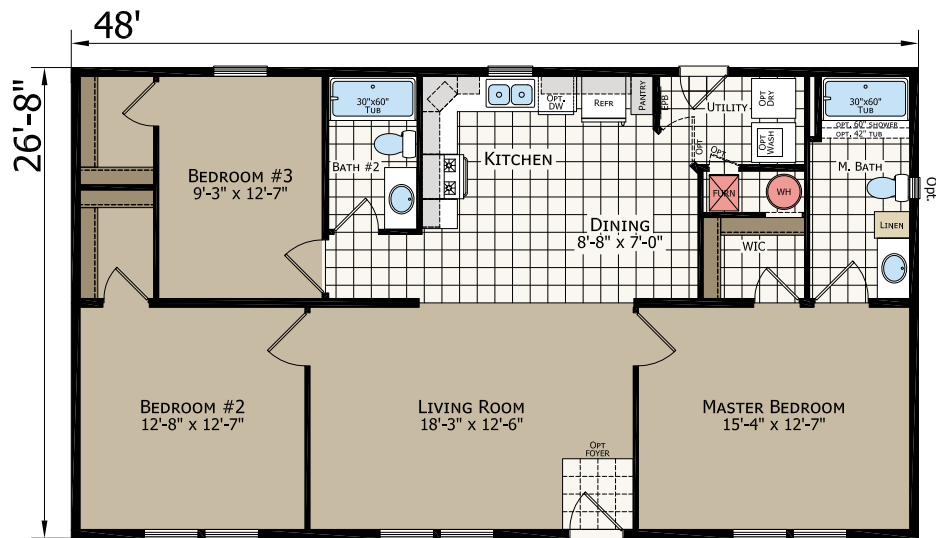
Opt. Kitchen



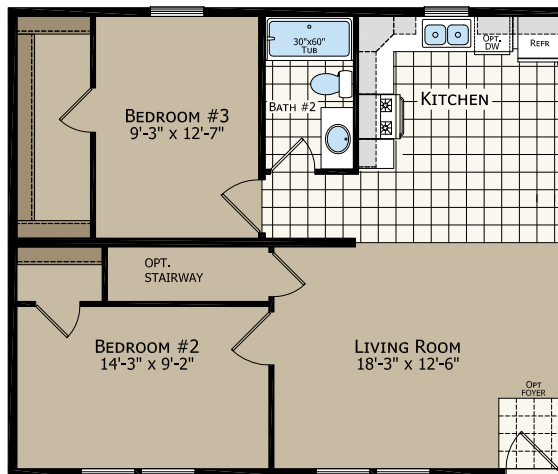
Opt. Country Kitchen

A24807

3 bed-2 bath
1280 sq. ft.



Opt. Fourth Bedroom



Opt. Stairway

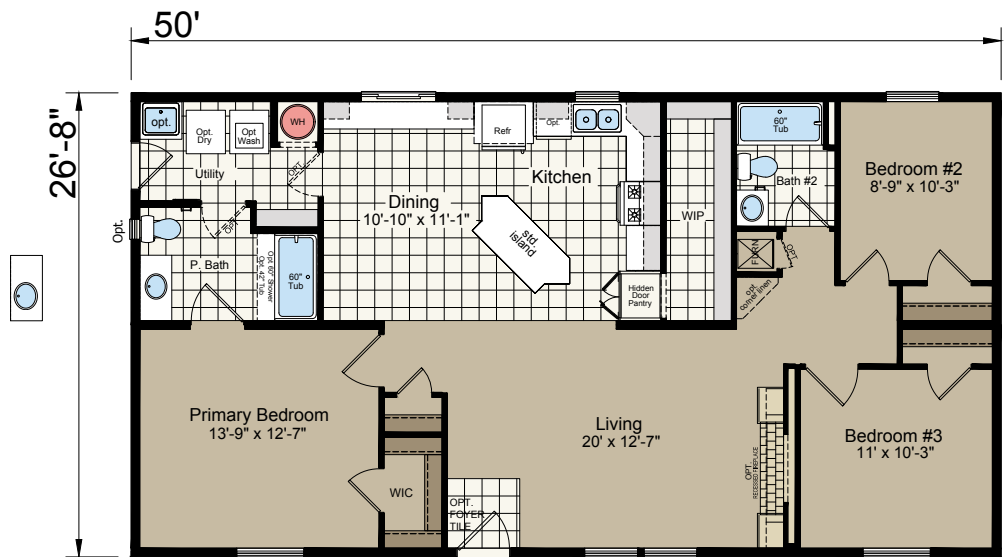




Artist Rendering

A25002

3 bed-2 bath
1333 sq. ft.

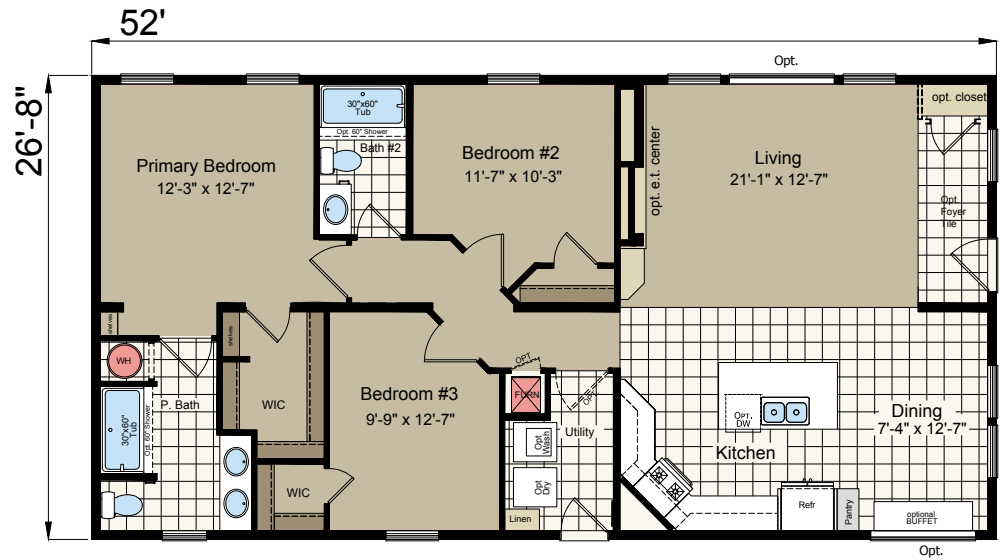






A25216

3 bed-2 bath
1387 sq. ft.

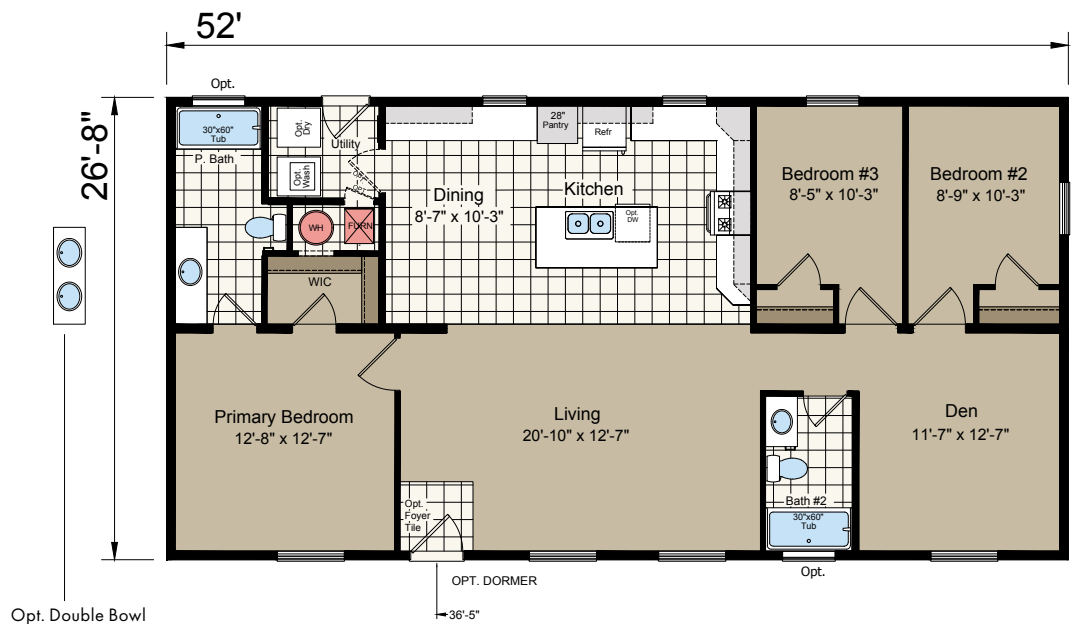






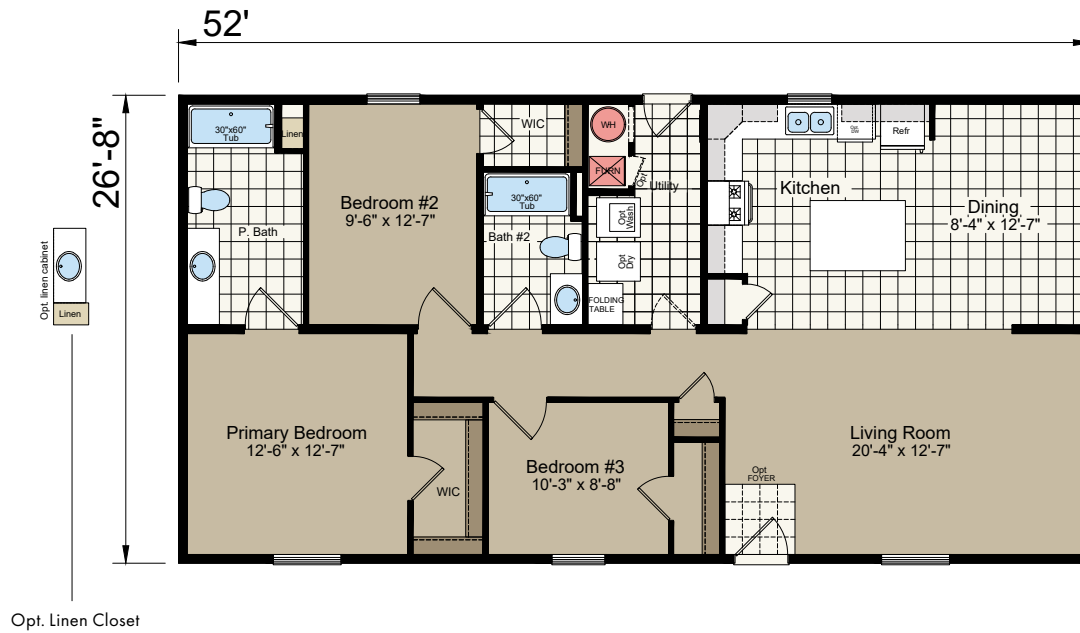
A25211

3 bed-2 bath
1387 sq. ft.



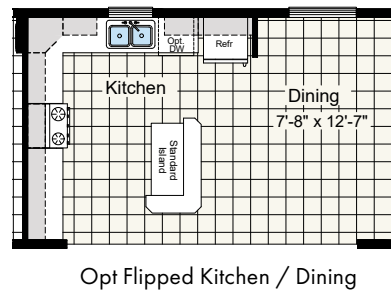
A25207

3 bed-2 bath
1387 sq. ft.

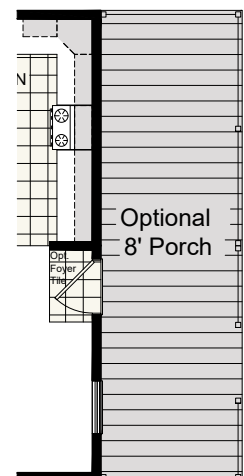
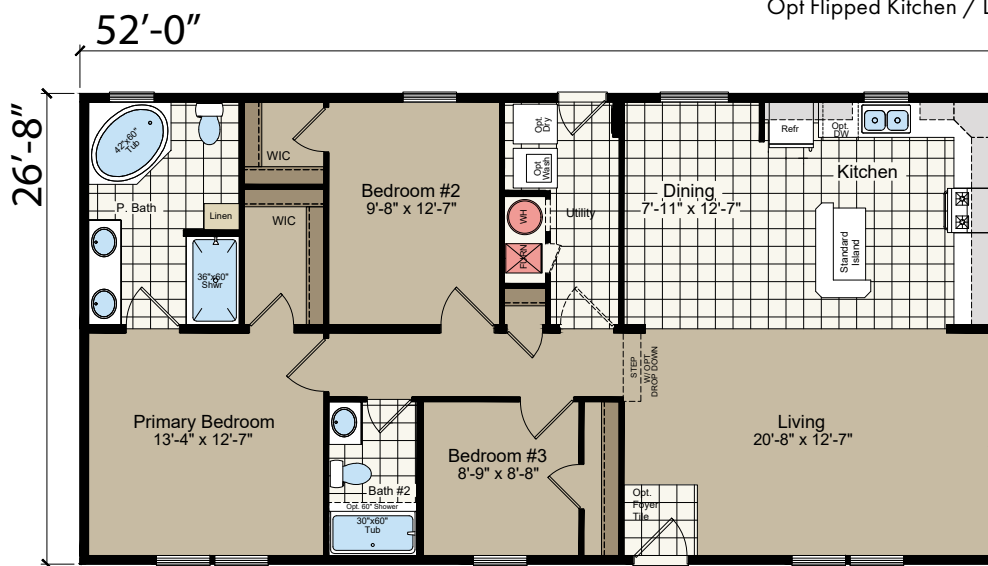


A45231

3 bed-2 bath
1387 sq. ft.



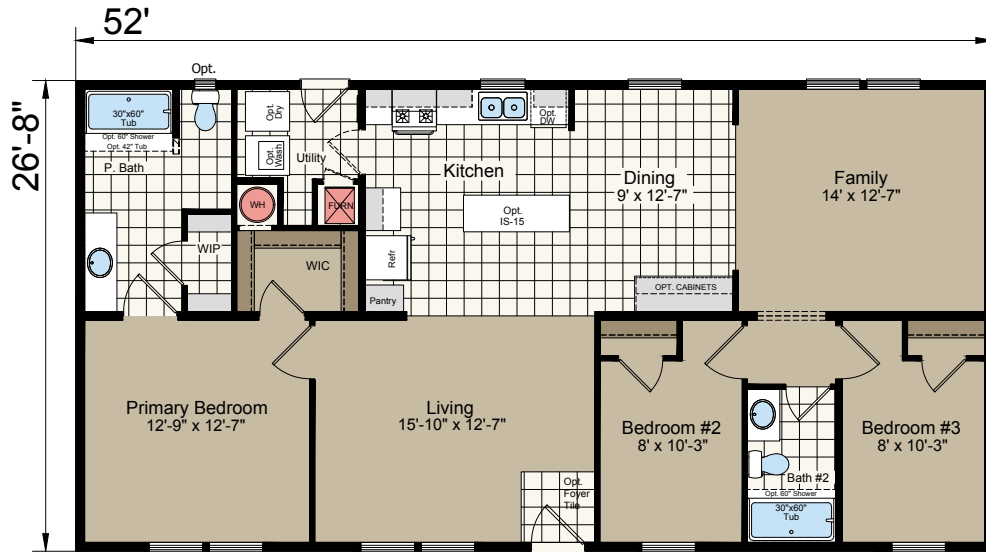
Opt Flipped Kitchen / Dining



Opt. Porch

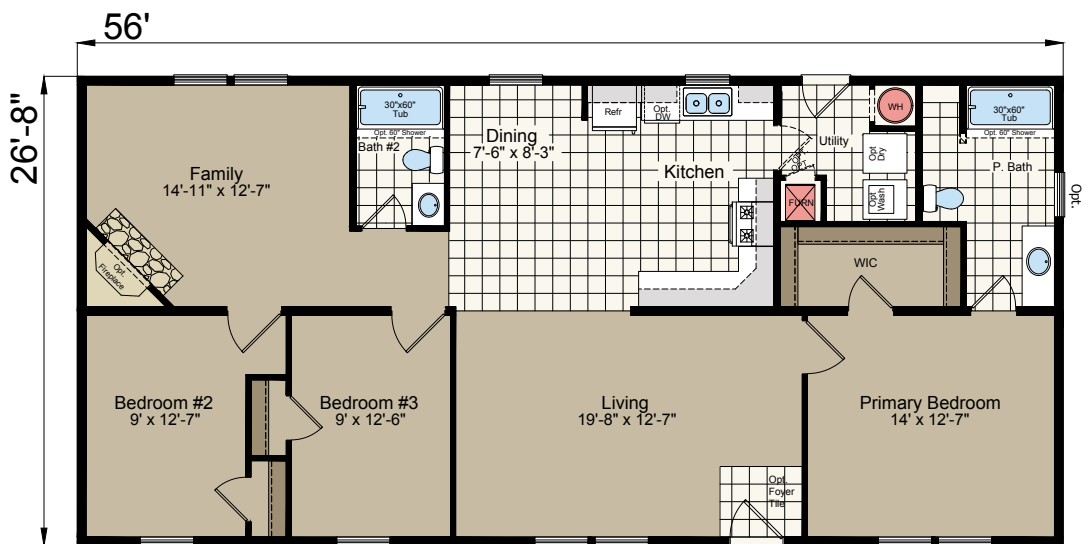
A26003

3 bed-2 bath
1387 sq. ft.



A25601

3 bed-2 bath
1493 sq. ft.



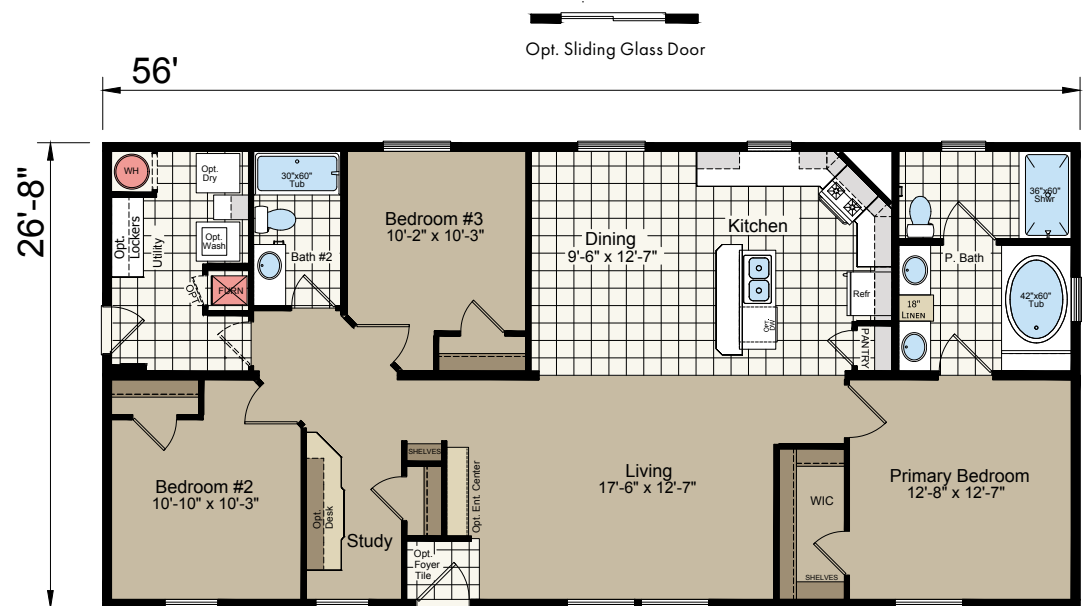
Opt. Double Bowl





A25609

3 bed-2 bath
1493 sq. ft.





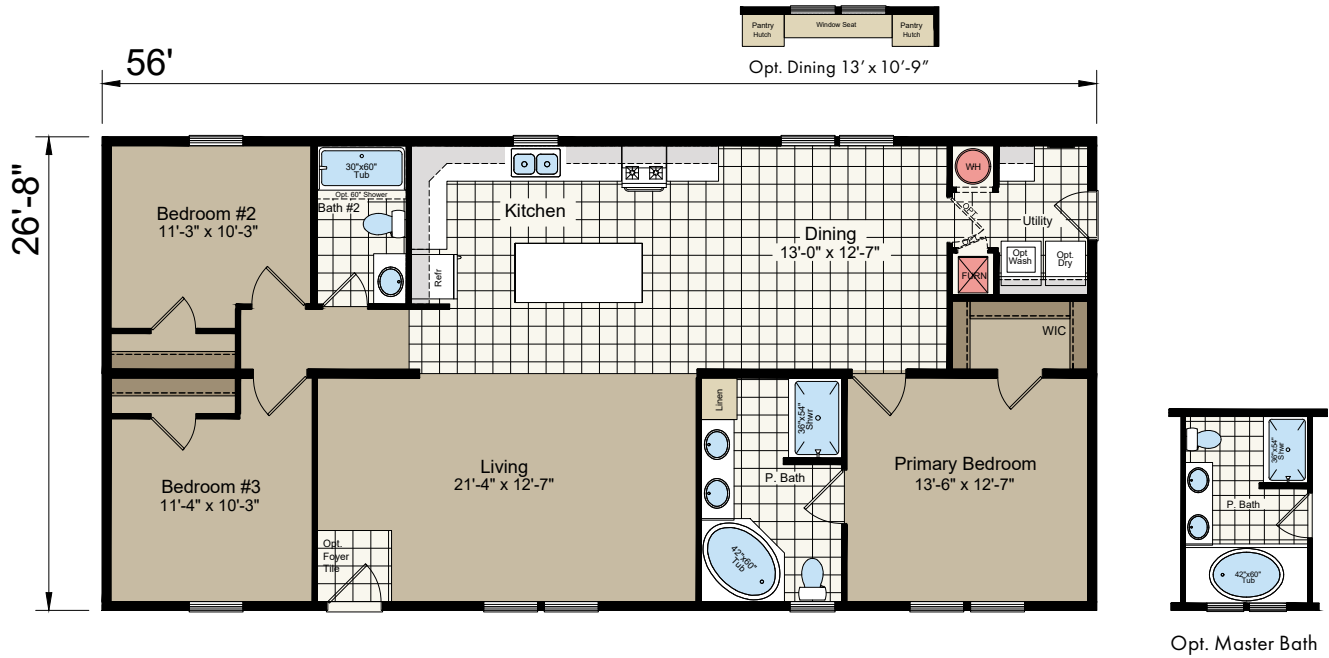


3 bed-2 bath
1493 sq. ft.



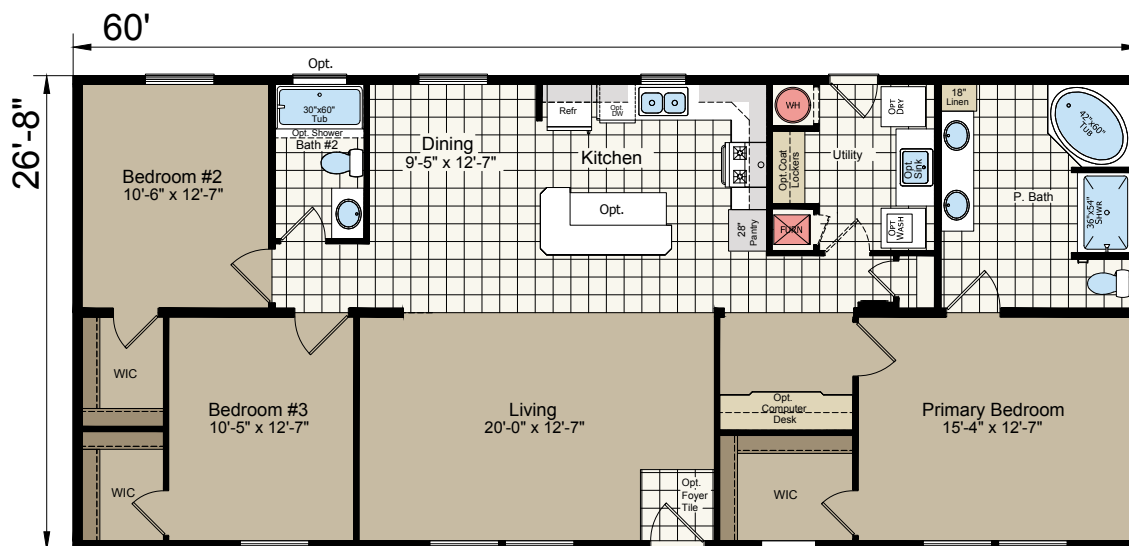
A45627

3 bed-2 bath
1493 sq. ft.



A46026

3 bed-2 bath
1600 sq. ft.





A26008

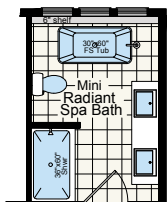
3 bed-2 bath
1600 sq. ft.



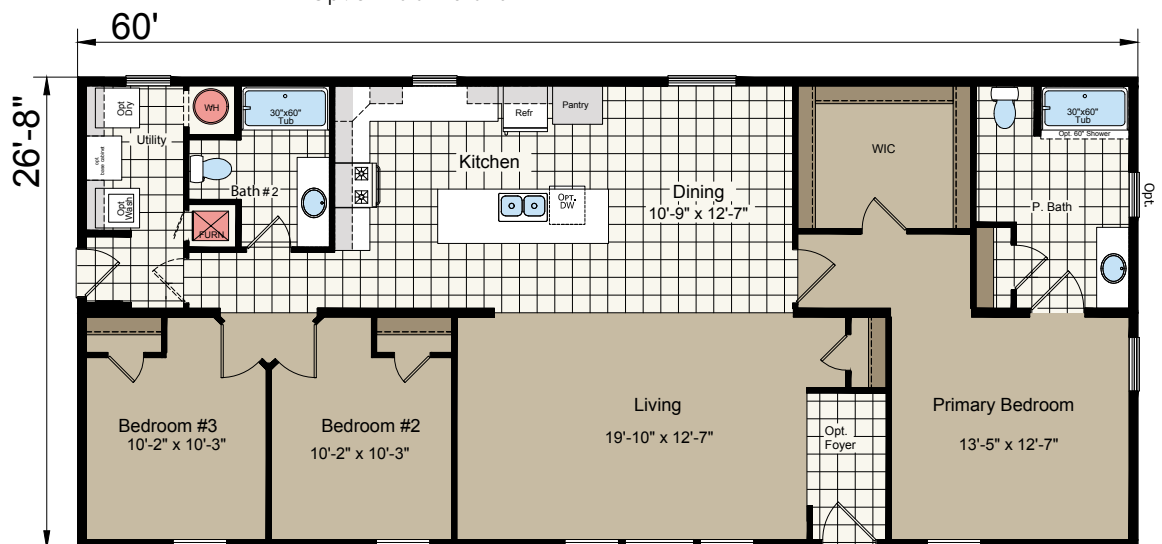
Opt. Ultimate Kitchen 3

Opt. Sliding Glass Door

Opt. 30' Barn Doors



Opt. Radiant Spa Bath

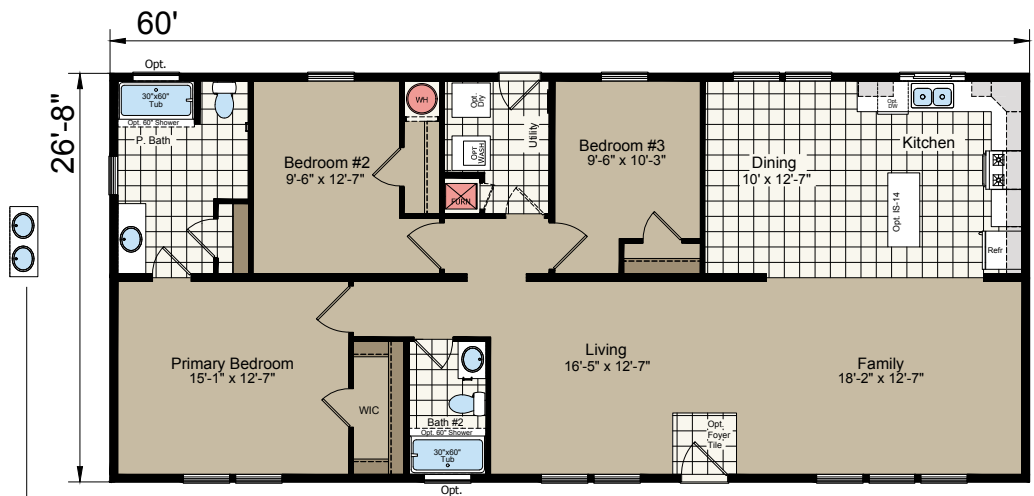






A26006

3 bed-2 bath
1600 sq. ft.

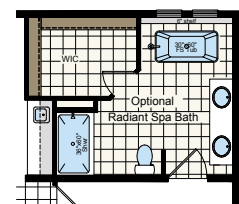
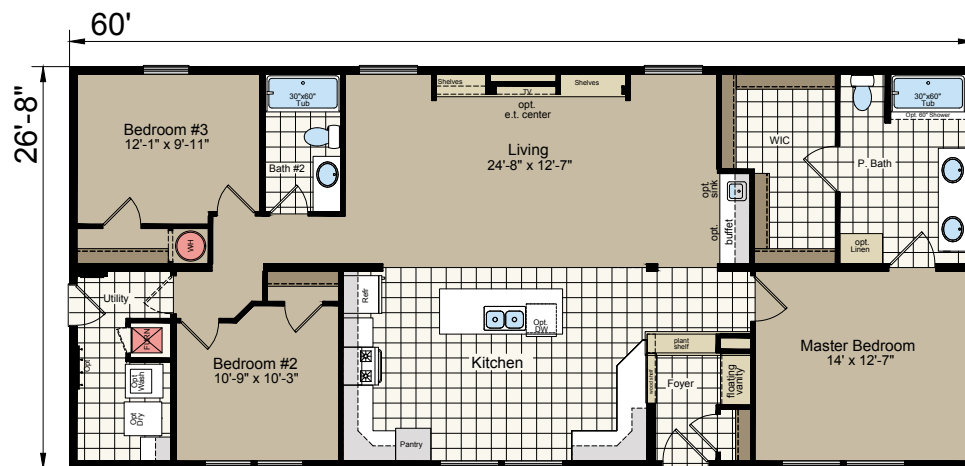


Opt. Double Bowl

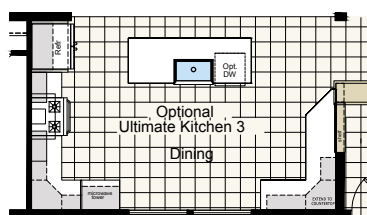


A26010

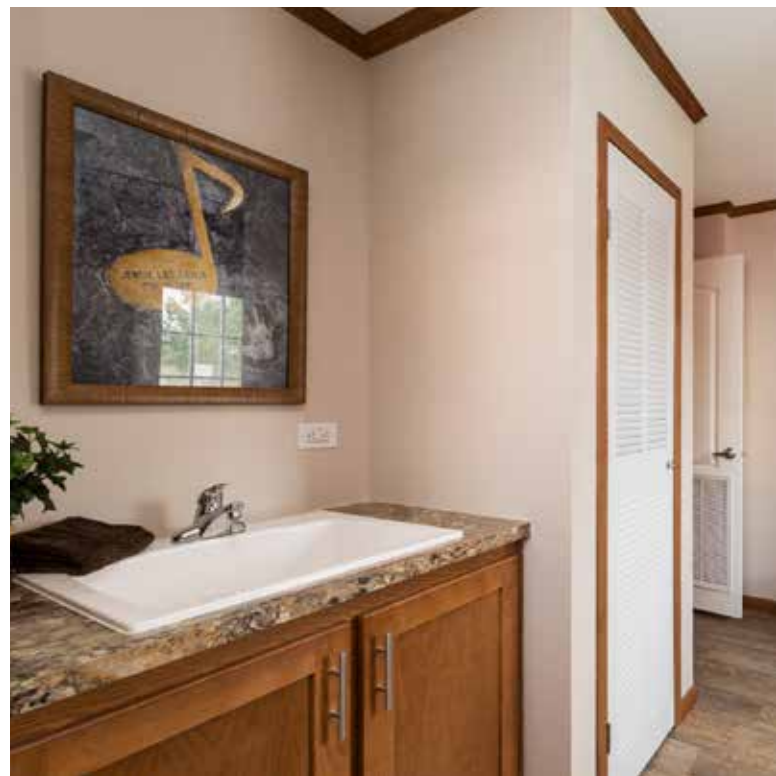
3 bed-2 bath
1600 sq. ft.



Opt. Radiant Spa Bath



Opt. Ultimate Kitchen 3

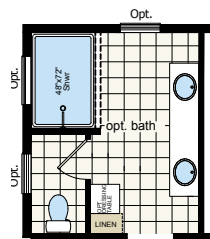




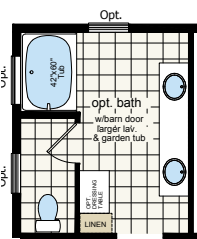
Artist Rendering

A26202

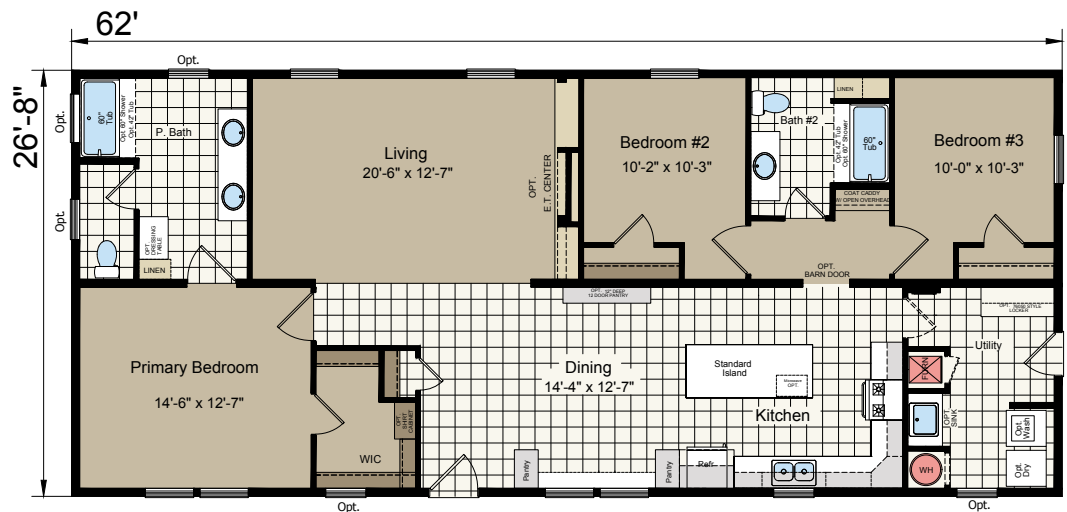
3 bed-2 bath
1653 sq. ft.



Opt. Shower Bath



Optional Garden Tub Bath





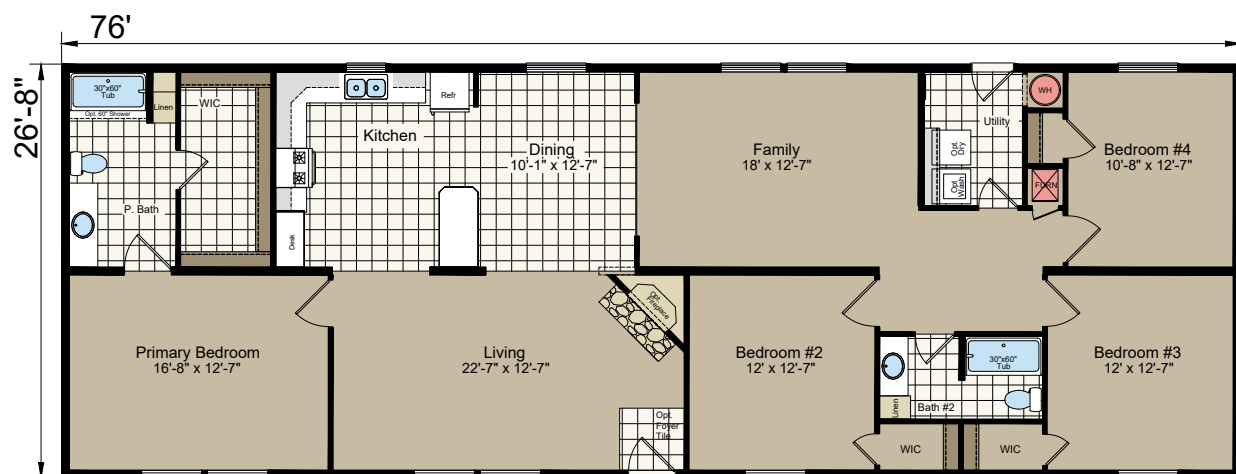


3 bed-2 bath
1707 sq. ft.



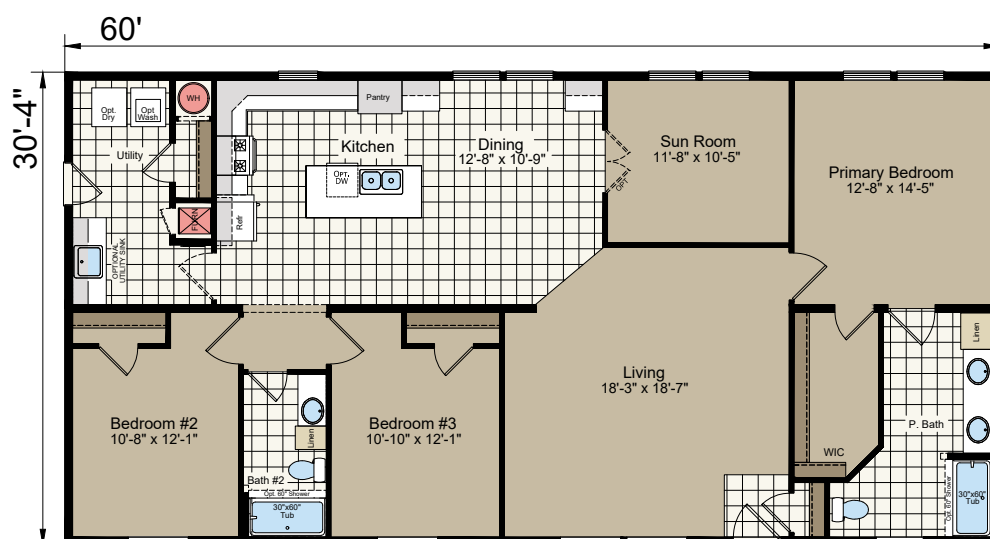
A27601

4 bed-2 bath
2027 sq. ft.



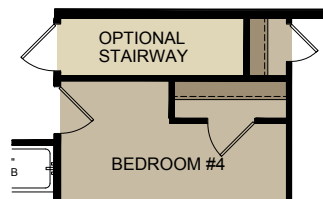
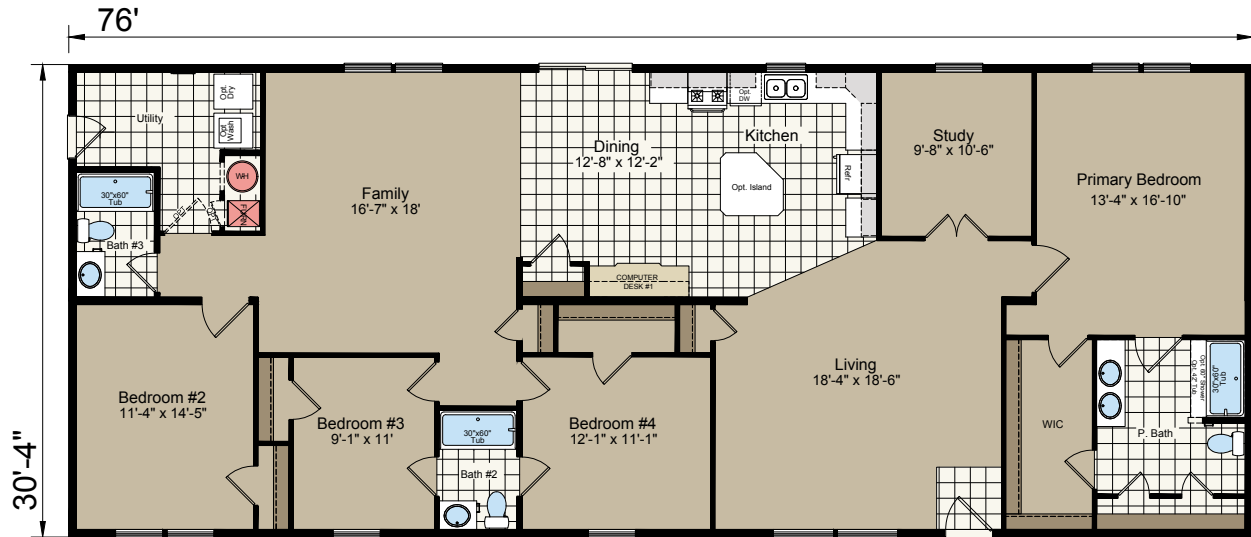
E46028

3 bed-2 bath
1820 sq. ft.

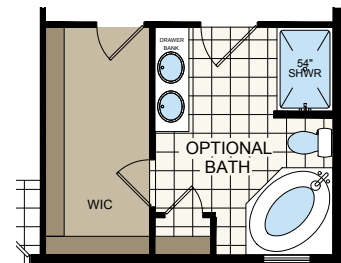


E47632

4 bed-3 bath
2305 sq. ft.



Opt. Stairway



Opt. Primary Bath



STANDARD FEATURES

CONSTRUCTION

- 2x6 Floor Joists – 16" O.C.
- 2X6 Sidewalls – 16" O.C.
- 20 lb. Roof – 24" O.C.
- 8' Sidewalls | Flat Stomped Ceilings
**Except Where Transportation Limitations Require 7'6" Sidewall with Cathedral Ceilings.
- Foamcore Sheathing
- Marriage Line Gasket
- Soffit/Fascia/Drip Edge
- Vinyl Covered Drywall Throughout
**Except Timberwolf
- Double 4.5" Dutch Lap Vinyl Exterior Siding
- Louvered Panel Shutters Front Door Side
- 3-Tab 25-Year Shingles with Ridge Vent
- Heat Tape Receptacle

ELECTRIC

- 100 Amp Electric Service
- LED Can Light at Kitchen Sink
- LED Can Light in Dining Room
- LED Can Light in Utility Room
- Optional LED Can Lights in Bedroom(s)
- Vanity Light in Bathrooms
- Switched Receptacles in Living Room & Bedrooms
- Exterior Coach Lights Front & Rear Doors
- Wire & Vent for Electric Dryer

BATHS

- GFI Receptacle
- 1-Piece 60" Tub/Shower
- Dual-Knob Faucets
- Towel Bar & Tissue Holders
- 36" Vanity Height | Plastic Sinks
- Mirror at Vanity(s)
- Laminate Countertop & Edge & Backsplash
- Porcelain Toilet
- Curtain Rod at Tub

KITCHEN

- 6" Stainless Steel Kitchen Sink
- 18 Cu. Ft. Refrigerator – Black
- 30" Deluxe Gas Range – Black
- Power Vent Range Hood
- GFI Receptacle
- Laminate Countertop, Edge & Backsplash
- Wood Cabinet Doors | MDF Stiles
- Bank of Drawers
- Fixed Overhead Shelf
- Cabinet Cove on Overhead cabinets

PLUMBING & HEATING

- Whole House Interior Water Shut-Off
- Plumb for Washer
- In-line Heat Ducts
- Gas Furnace with Thermostat
- 30-Gallon Electric Water Heater

MISCELLANEOUS

- Combo Smoke/CO Detectors (Per Code)
- Carpet
- Carpet Pad
- Vinyl in Wet Areas
- 2-Panel White Interior Doors with Knobs
- Vented Shelves in Closets
- Wire Shelf Over Washer/Dryer Area
- R-11 Floor Insulation
- R-19 Sidewall Insulation
- R-22 Roof Insulation
- 38" x 82" Sunburst Fiberglass Front Door
- 34" x 82" 9-Lite Rear Door
- Deadbolts on Exterior Doors (Keyed Alike)
- 36" x 61" & 30" x 36" Low-E Gridded Vinyl Windows (Per Plan)
- Choice of Décor

Due to continuous product development and improvement, prices, specifications, and materials are subject to change without notice or obligation. Square footage and other dimensions are approximate. Exterior images may be artist renderings and are not intended to be an accurate representation of the home. Renderings, photos and floor plans may be shown with optional features or third-party additions.

ATLANTIC[®] HOMES

2551 Champion Dr, Claysburg, PA 16625

www.atlantichomespa.com