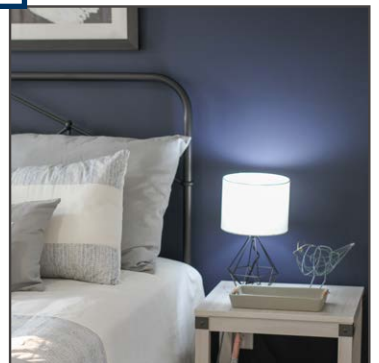
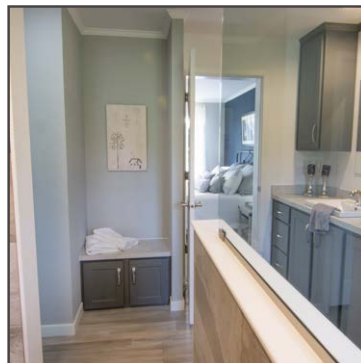




Deer Creek



STANDARD FEATURES

INTERIOR

Flat Ceiling Throughout
Smooth Ceiling w/ Cove Moulding
8' Sidewall Height
Primed Smooth Drywall Throughout
LED Flush Mount Ceiling Lights
Pre-Hung Door Jambs
Mortise Hinges
Knob Interior Passage Sets
Floor Mount Door Stops
Smoke Detectors With Battery Back-Up
Wire Shelving in Guest Closet
2" Mini Blinds
Designer Window Treatments
White 6-Panel Passage Doors
Contemporary Moulding Package

EXTERIOR

Black Lantern Light - Front & Rear Door
GFI-Protected Exterior Receptacles
(Front & Back)
Vinyl Dutch Lap Siding
OSB Sheathing Under Siding
2/12 Roof Pitch with 10" Eaves
12" Gable End Overhang
Ridgevent Roof Ventilation System
38x82 Steel 6-Panel Front Door
38x82 Steel 6-Panel Rear Door
Schlage Exterior Locksets Keyed Alike
Vinyl Insulated Windows w/Grids
Window Lineals on Front Door Side

CONSTRUCTION

2x6 Transverse Floor, 16" centers**
2x6 Exterior Walls on 16" Centers**
¾" T&G OSB Floor Decking
30# Roof Load
Recessed Frame Design

KITCHEN

Stainless Steel SxS Refrigerator
Stainless Steel Self Cleaning Range
Stainless Steel Dishwasher
Galley Sink with Coil Spring Gooseneck
Faucet & Pull Out Sprayer
Full Ceramic Backsplash
Refrigerator Surround
1 USB Receptacle

BATHS

Curved Front Garden Tub/Shower Bath 2
4x6 Ceramic Walk-in Shower - Bath 1
1.6 Gallon Per Flush Elongated Toilets
China Stool, Tank and Lid
Square China Lav Sinks
Lighted Vent Fan in Each Bath
Structured Flow Brushed Nickel Faucets
Anti-Scald Faucets in Tub/Shower
Shower Drain with Removable Strainer

CABINETRY

Evermore Custom Cabinetry
(KCMA Certified)
Premium Cabinetry
Mission Style Cabinet Doors
Cabinet Pulls
Hardwood Moulding on Cabinets
Lined Overhead Cabinets
42" Height Overhead Cabinets
Drawer over Door Base Cabinets
Concealed Cabinet Hinges
Soft Close Drawers
Dovetail Drawers
Base and Center Shelves in Base Cabinets
Base Shelf in Vanities
36" High Bath Vanities



UTILITIES

Plumbed and Wired for Washer
Vented and Wired for Dryer
Wire Shelf over W/D Hookups
100 AMP Electrical Service w/Extended
Panel
40 Gallon Electric Water Heater with
Pan
Hi-Efficiency Gas Furnace
White 6-Panel Furnace Door w/Grill
Perimeter Heating System
Air Exchanger System for Furnace
Aluminum Heat Ducts
In-Floor Cross-Over Heating System
Copper Wiring Throughout
Main Water Line Shut-Off Valve
Programmable Thermostat
Water Shut-Off Valves
Exterior Water Faucet (Front & Back)

FLOORING

Choice of Various Styles of Textured
Carpet:
- Standard 18 oz. Lucerne/Innovations
- Upgrade Styles Available
Rebond Carpet Pad with Tackstrip
Carpet Installation
DiamondFlor Vinyl Flooring per print

BEDROOMS

LED Flush Mount Lights
Egress Window Each Bedroom
Wire Shelving in Wardrobes
Switched LED Light in All Walk-In
Closets

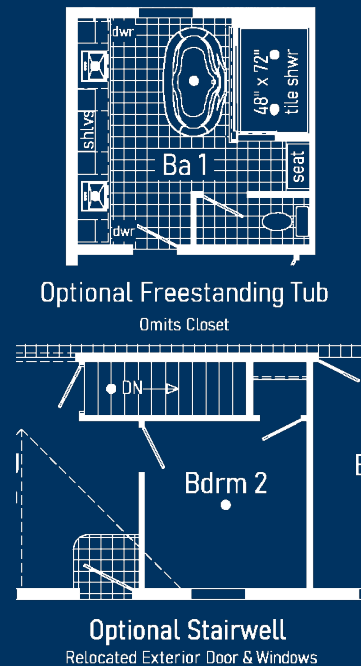
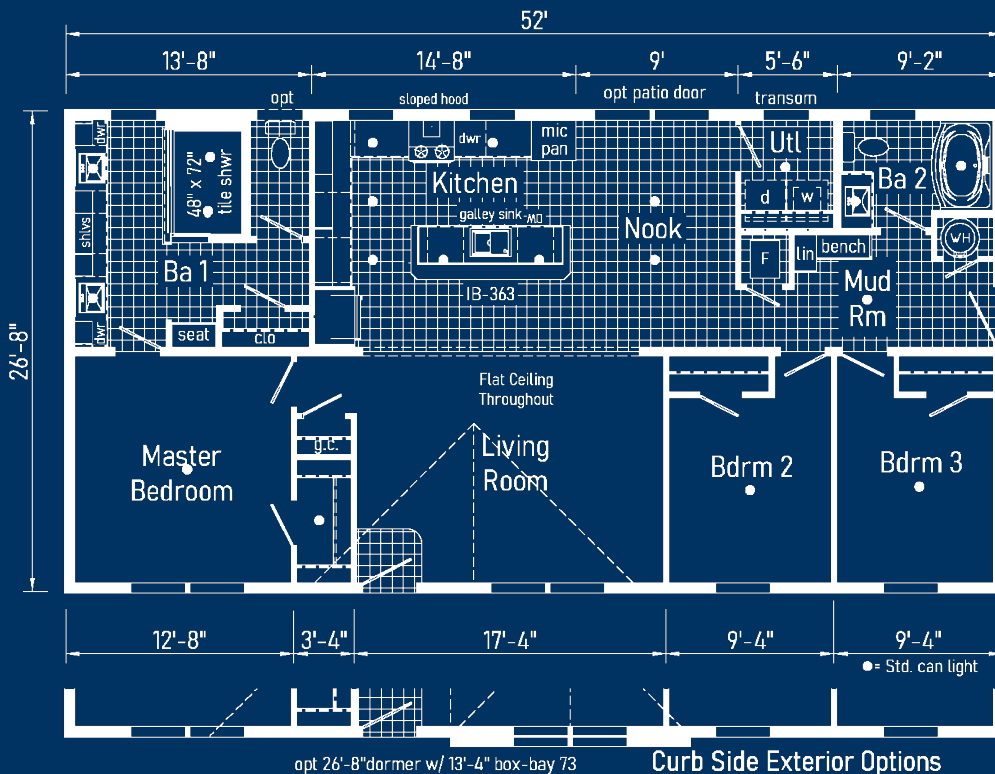
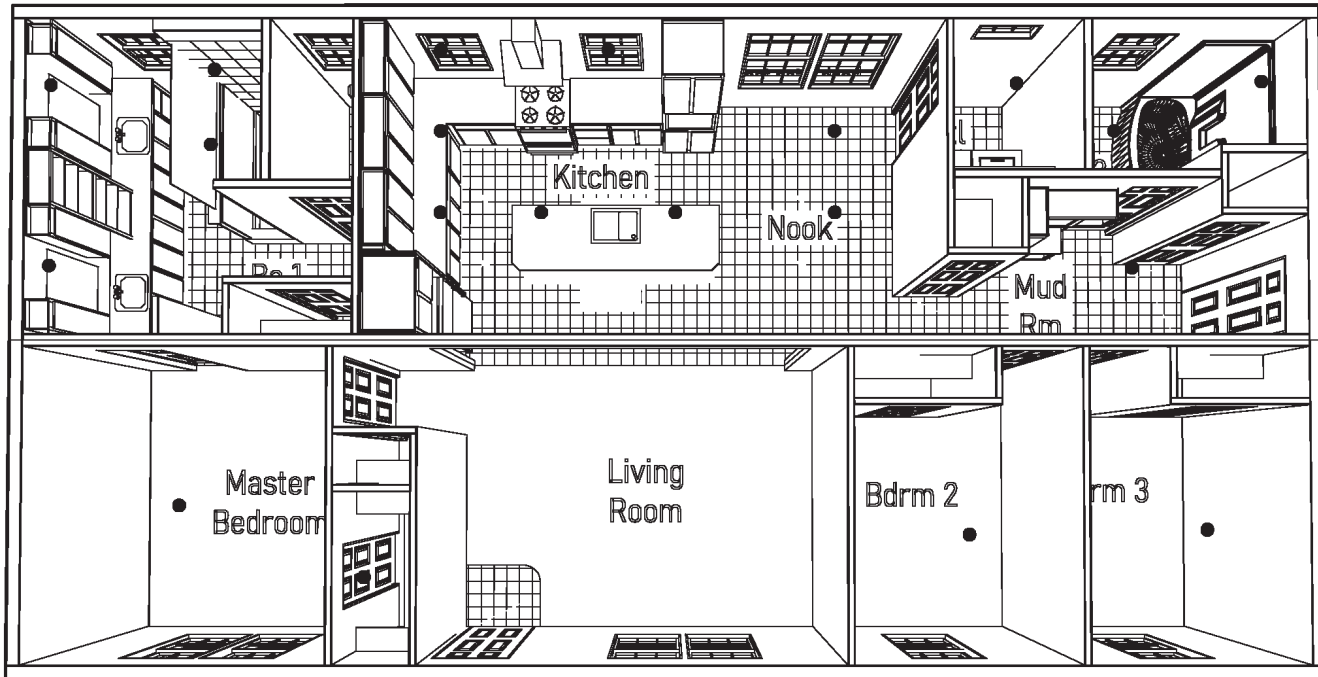
INSULATION

R-22 Fiberglass in Floor
R-19 Fiberglass in Walls
R-31 Avg. Blown in Ceiling

**NOTE: Spacing for Framing Members
may vary due to Design Requirements

DE3020P 2852

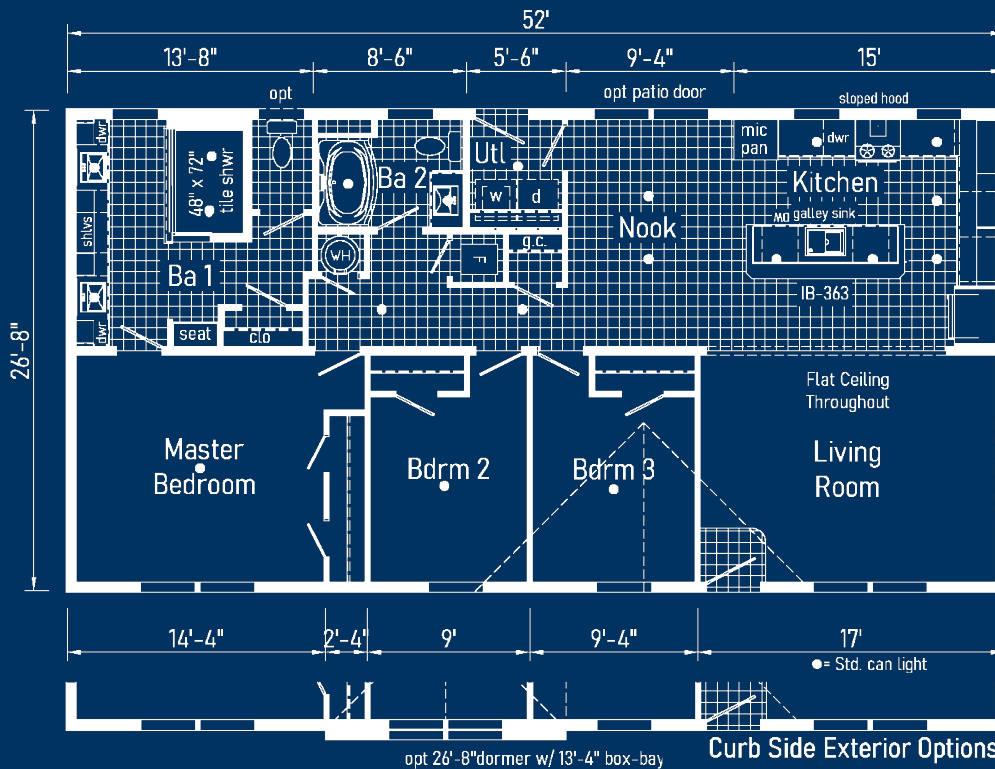
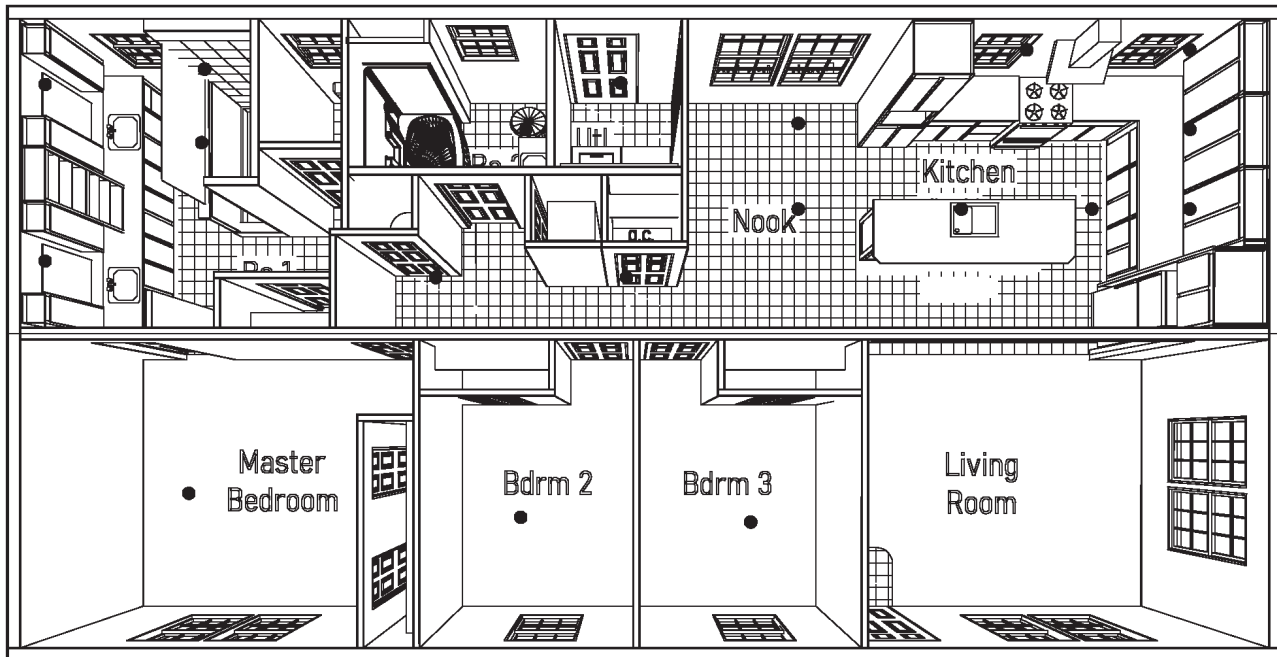
Approx. 1387 Sq. Ft.



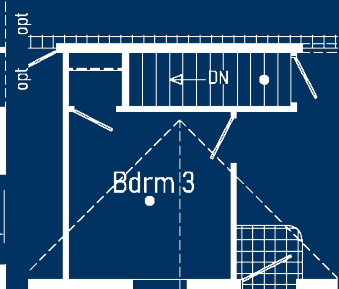
DEERCREEK ALLURE

DE3021P 2852

Approx. 1387 Sq. Ft.



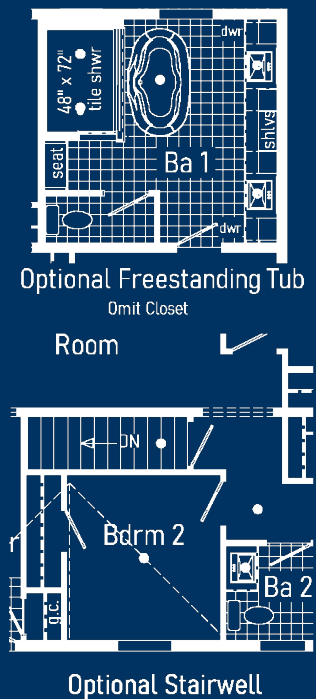
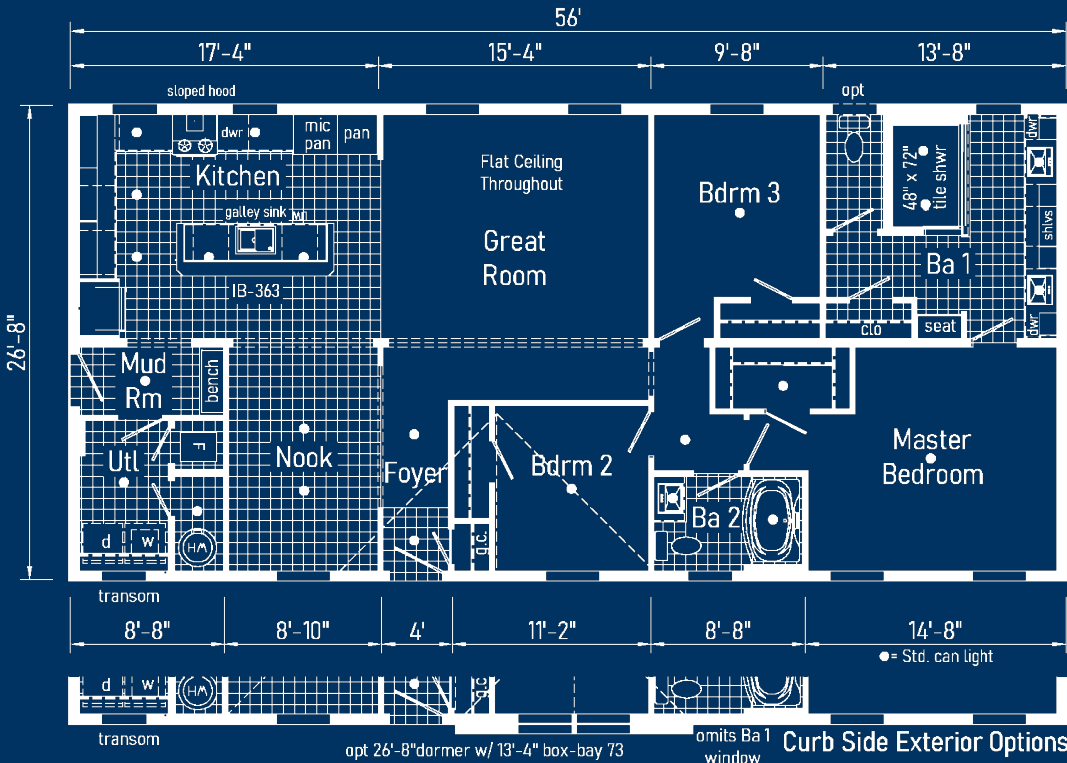
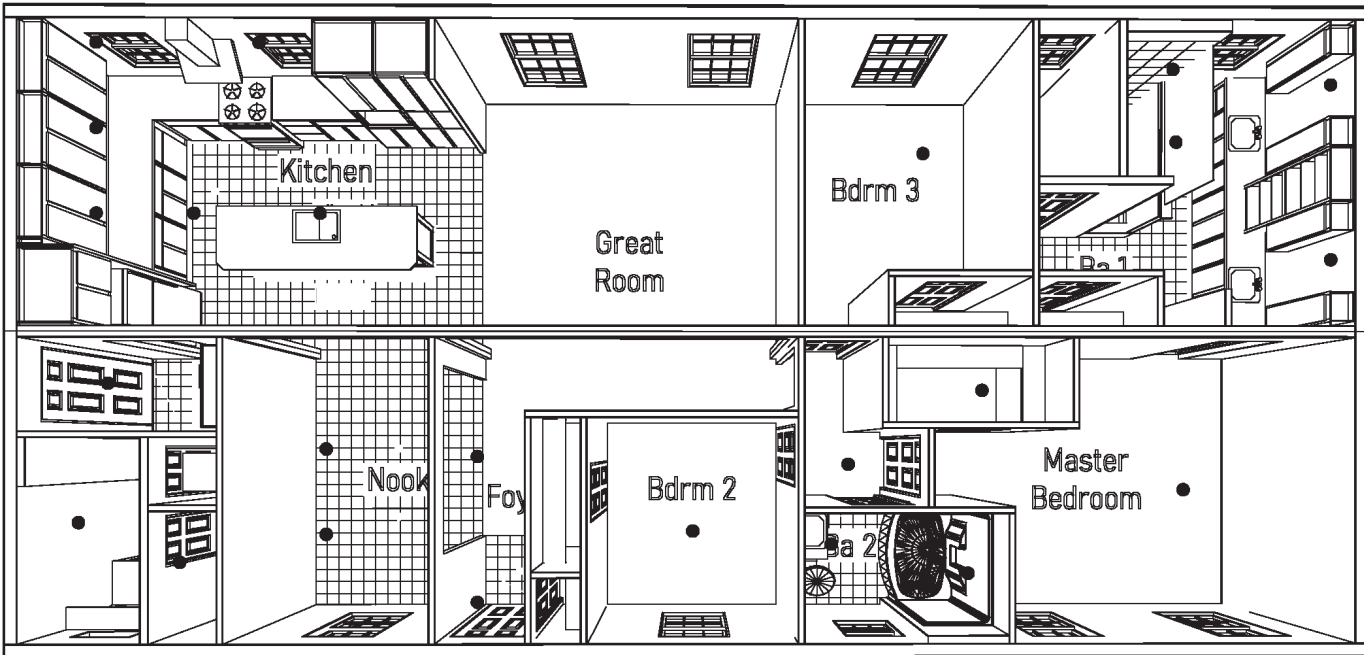
Optional Freestanding Tub
Omits Closet



Optional Stairwell

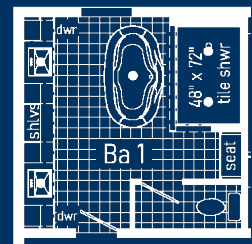
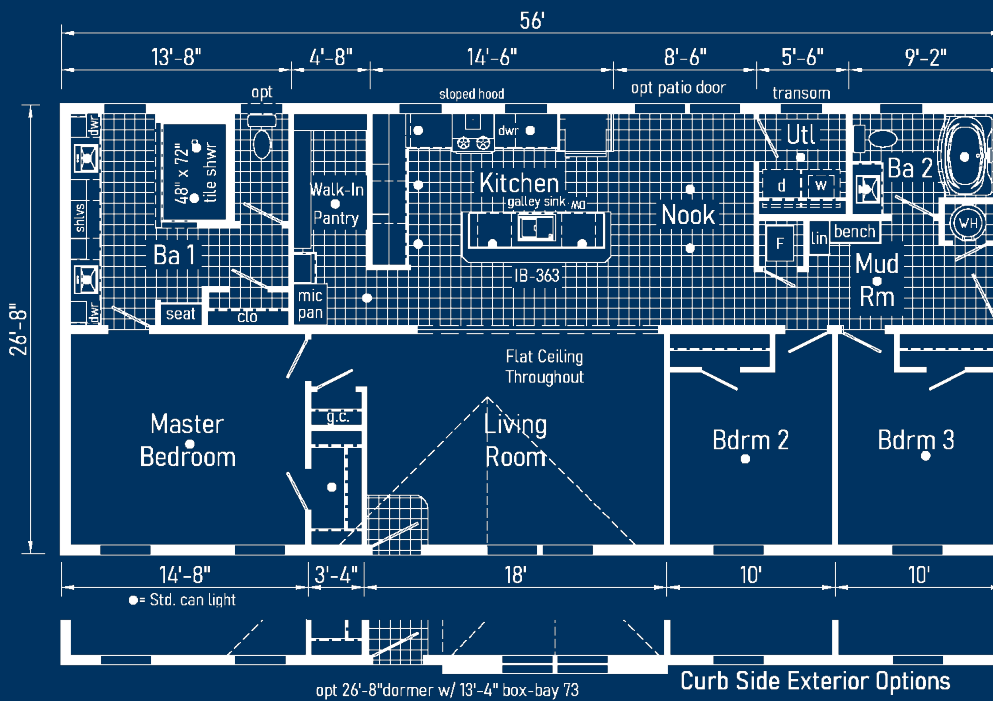
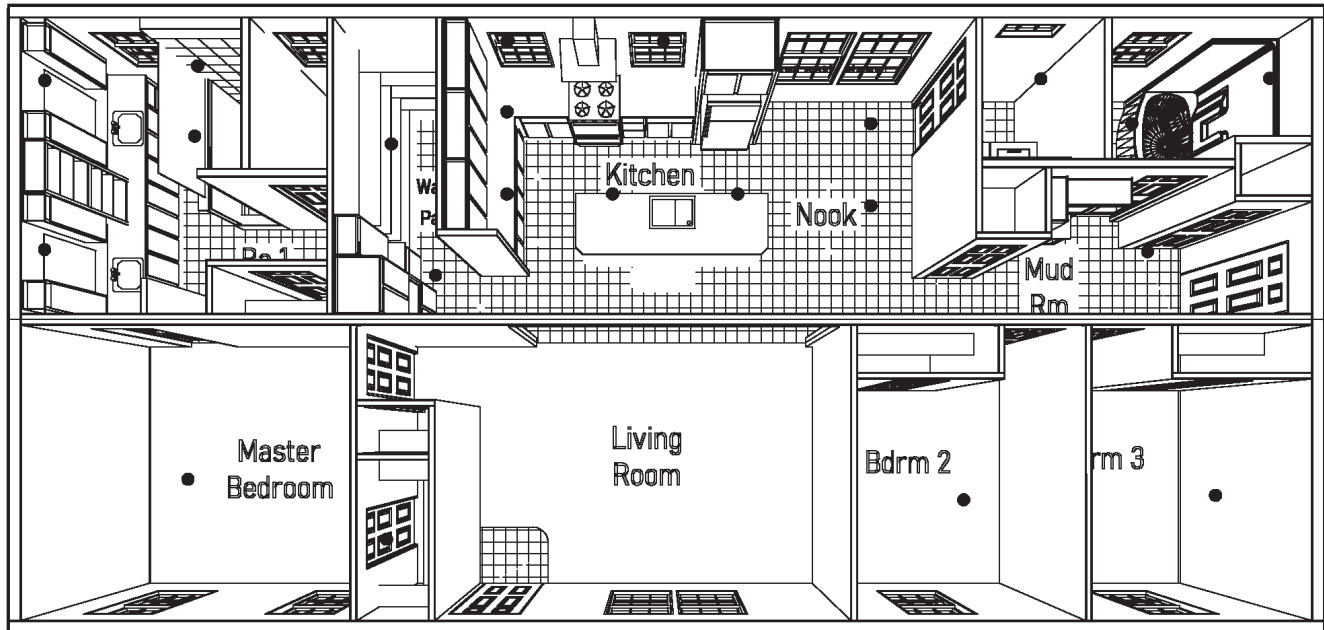
Curb Side Exterior Options

DE3022P 2856 Approx. 1493 Sq. Ft.

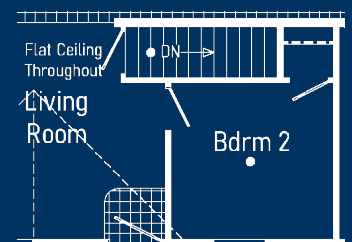


DE3030P 2856

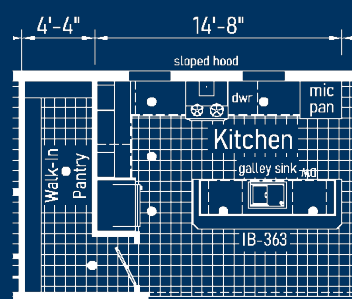
Approx. 1493 Sq. Ft.



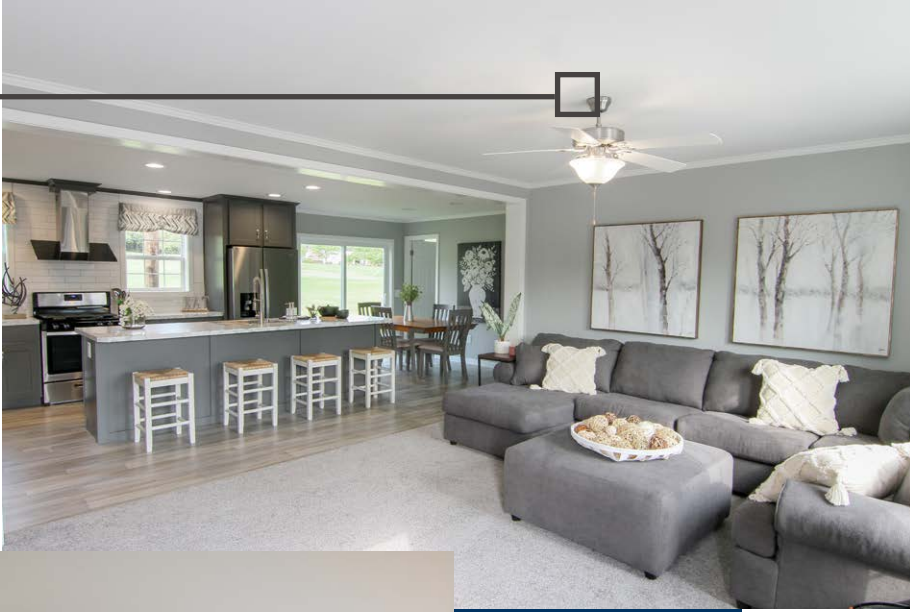
Optional Freestanding Tub
Omits Closet



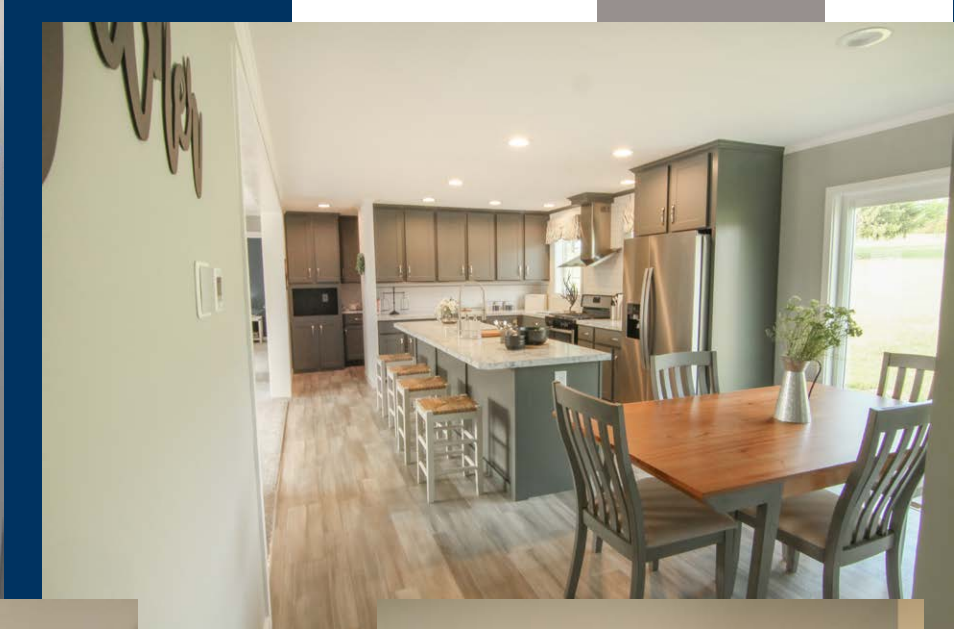
Optional Stairwell
Relocated Exterior Door & Windows



Alternate Kitchen



Scan to Watch
Video!



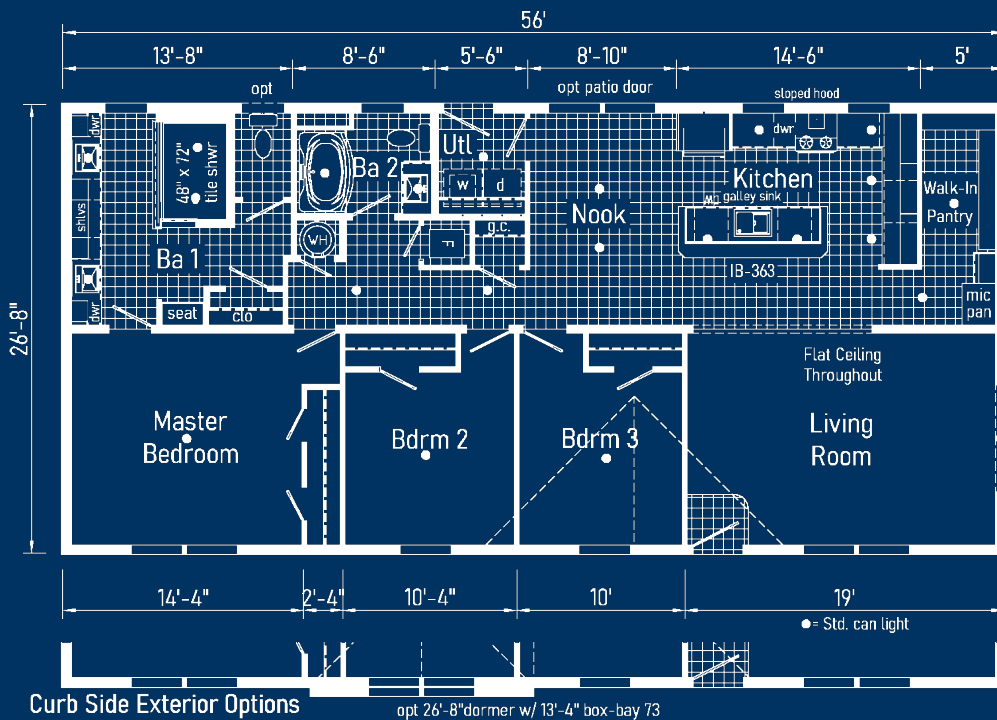
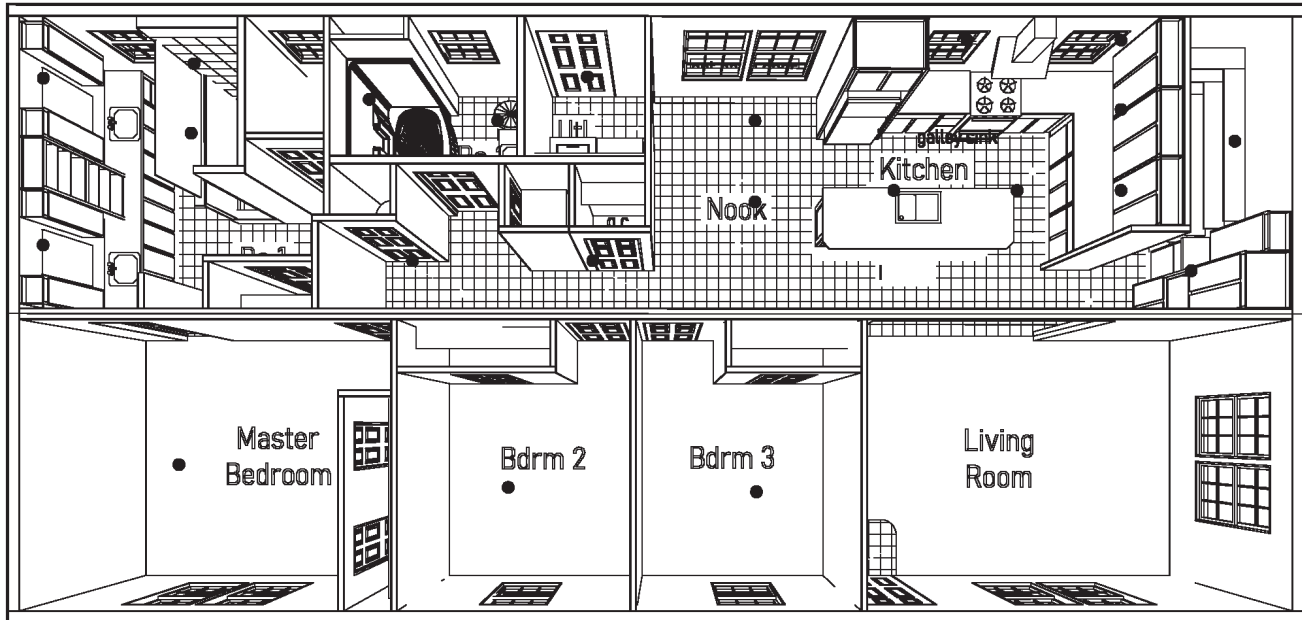
*Please use pictures
for floorplan
vision only. Decors
and materials used are
constantly changed
and improved.



DEERCREEK ALLURE

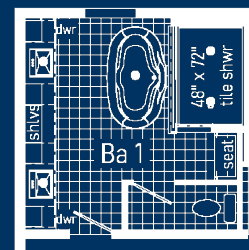
DE3031P 2856

Approx. 1493 Sq. Ft.

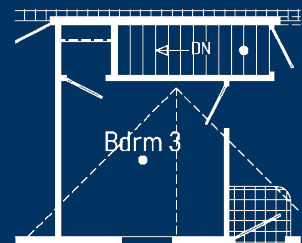


Curb Side Exterior Options

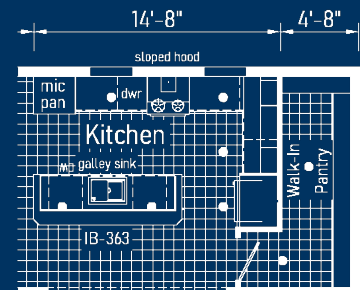
opt 26'-8" dormer w/ 13'-4" box-bay 73



Optional Freestanding Tub
Omits Closet



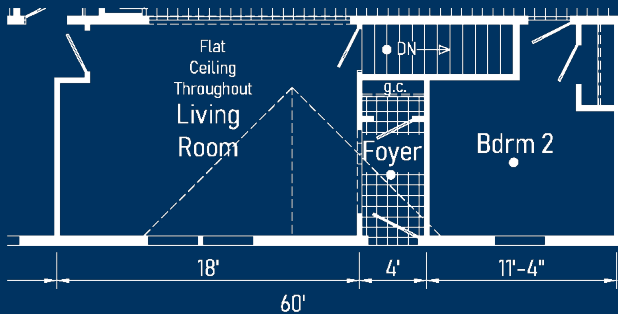
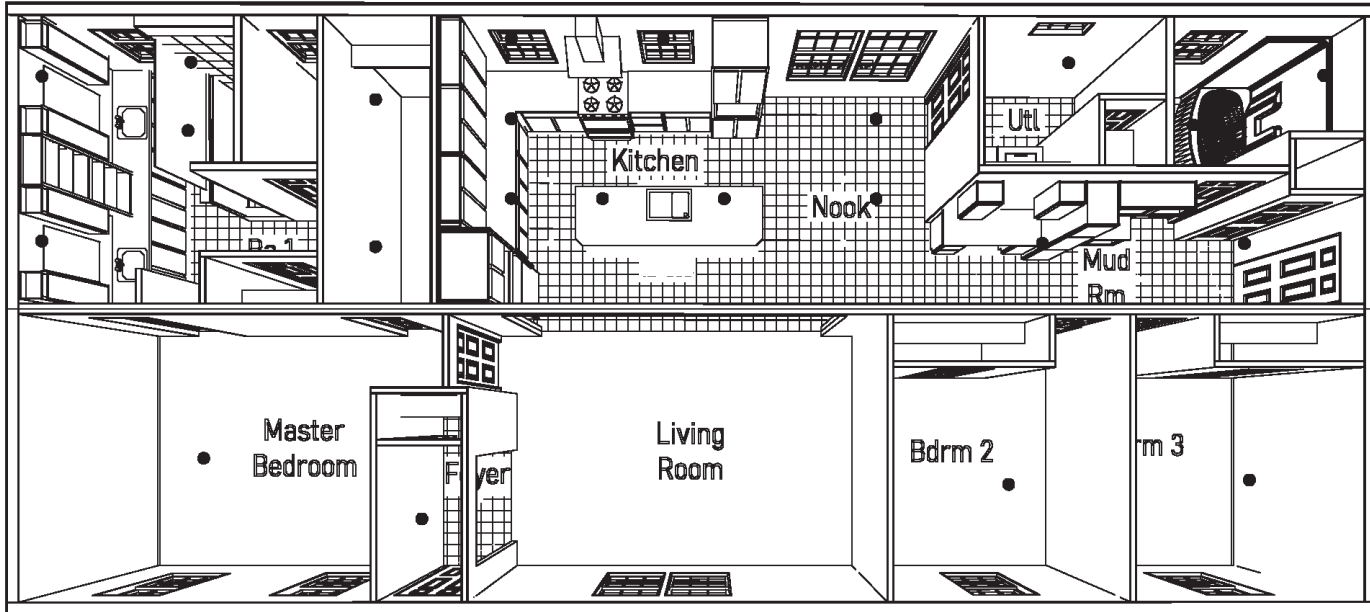
Optional Stairwell



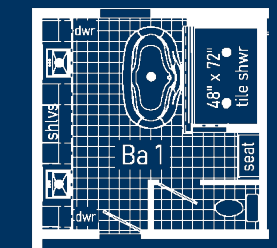
Alternate Kitchen

DE3024P 2860

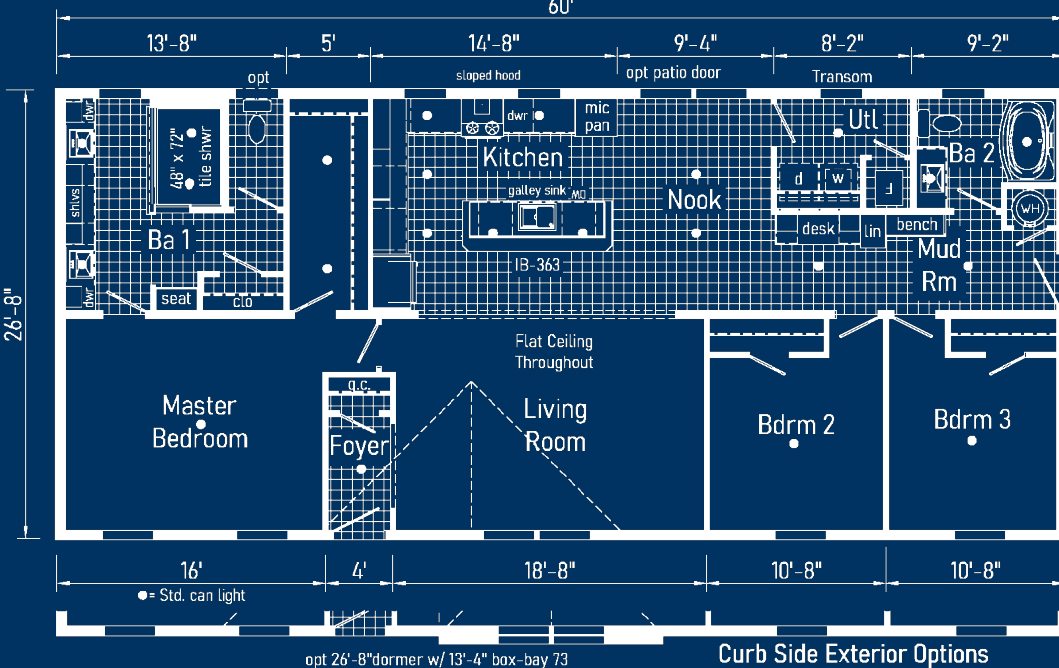
Approx. 1600 Sq. Ft.



Optional
Stairwell
Relocated Foyer
& Windows



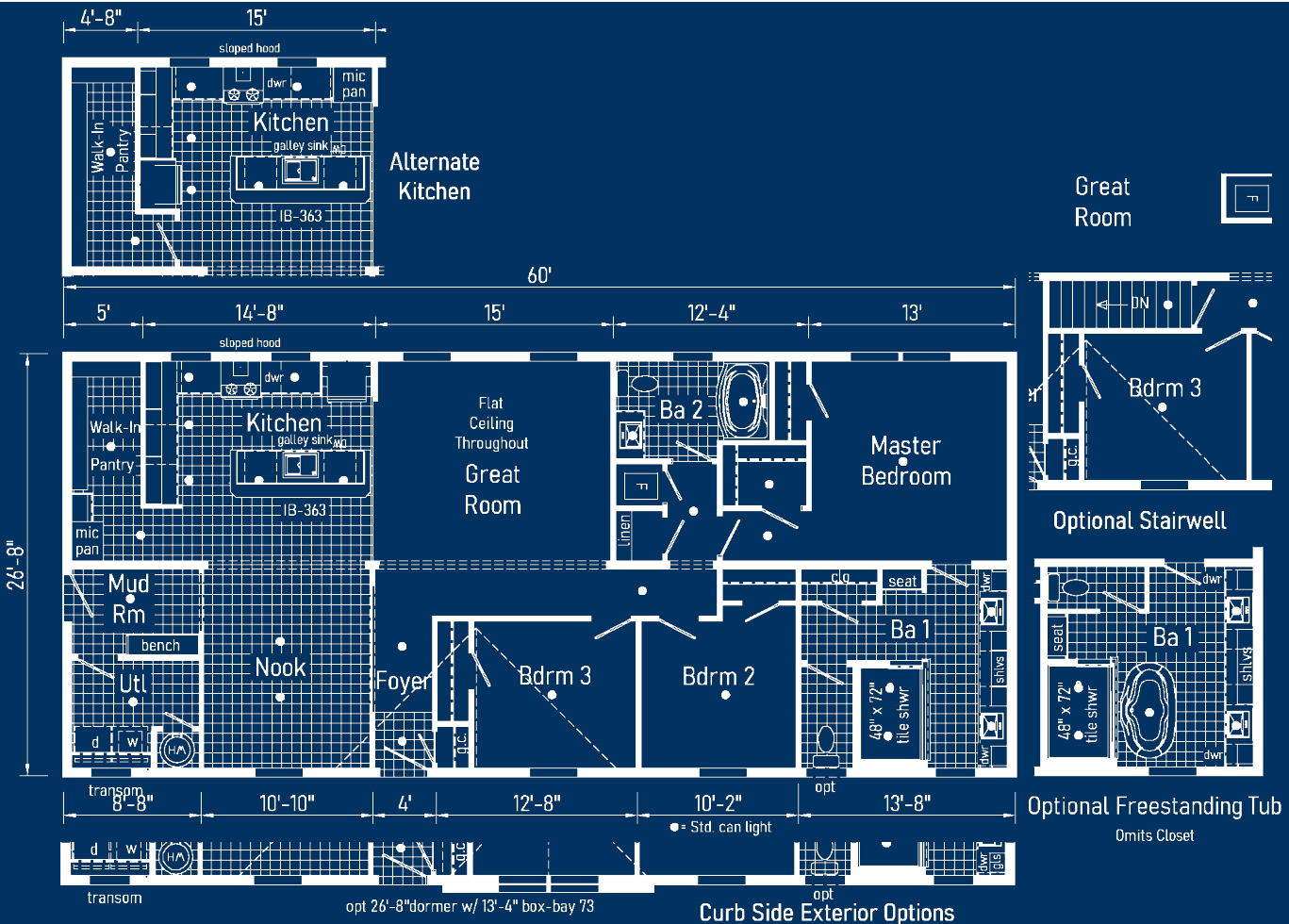
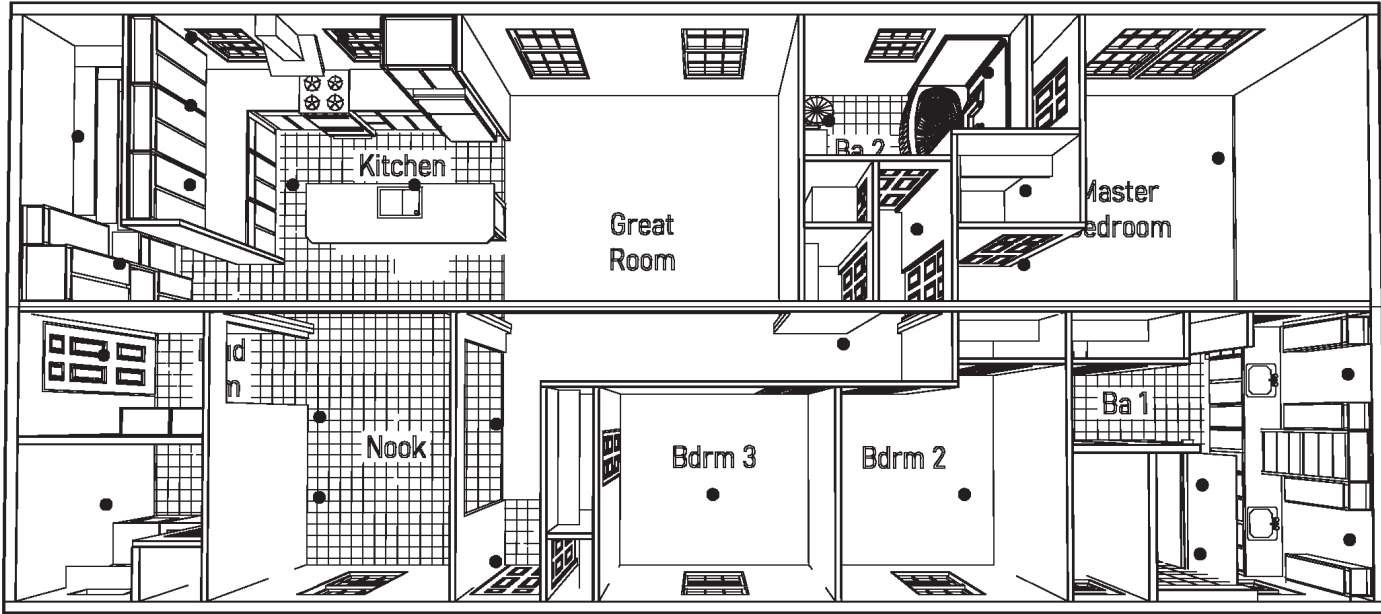
Optional Freestanding Tub
Omits Closet



DEERCREEK ALLURE



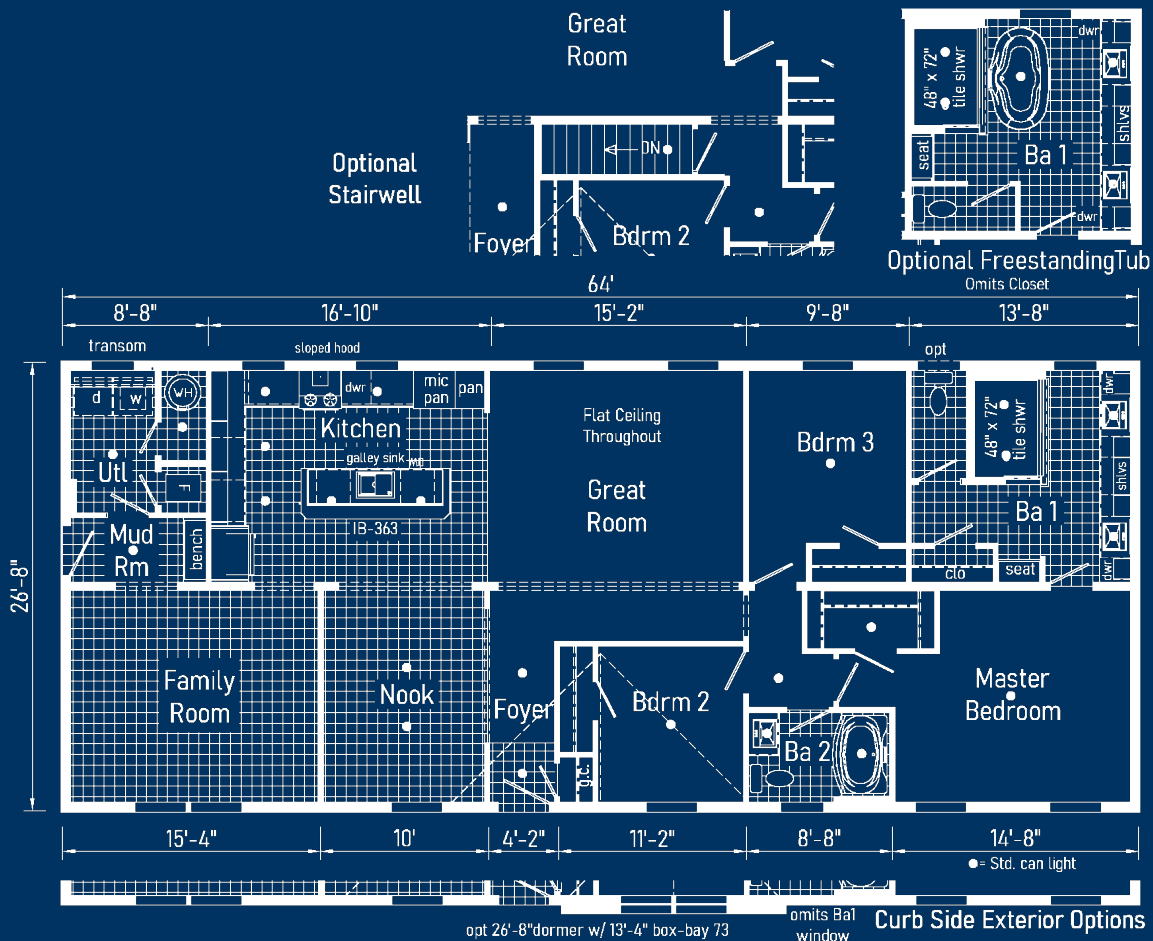
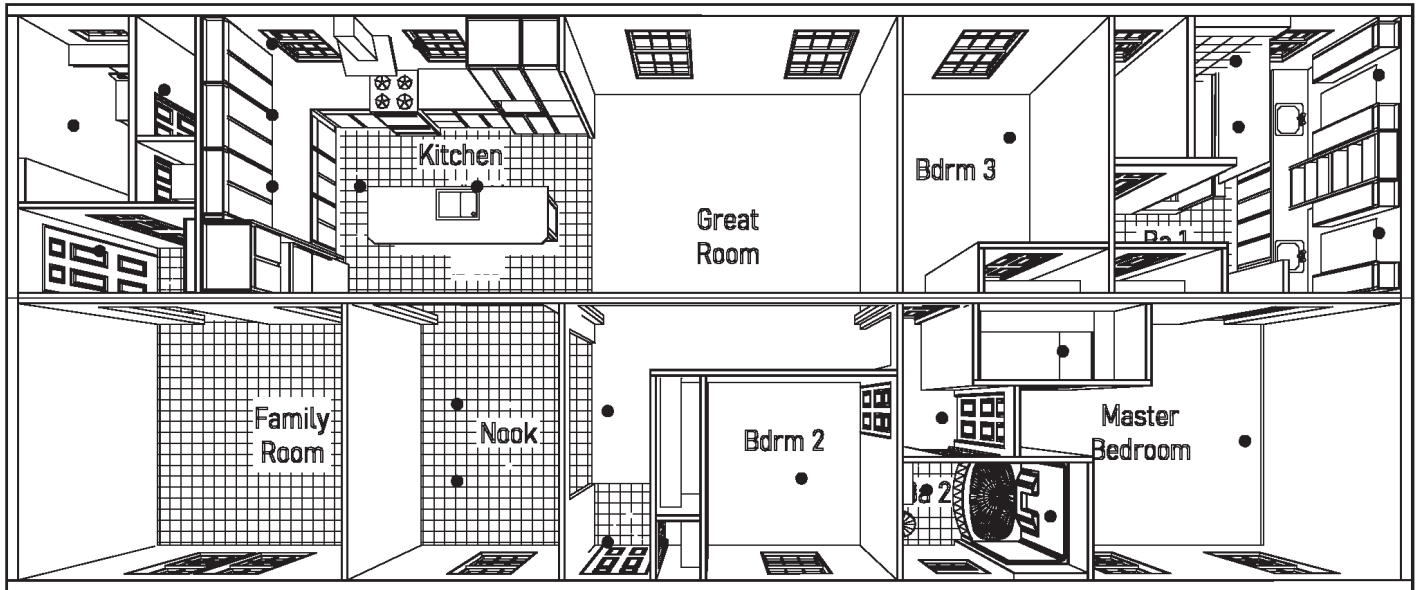
DE3032P 2860 Approx. 1600 Sq. Ft.



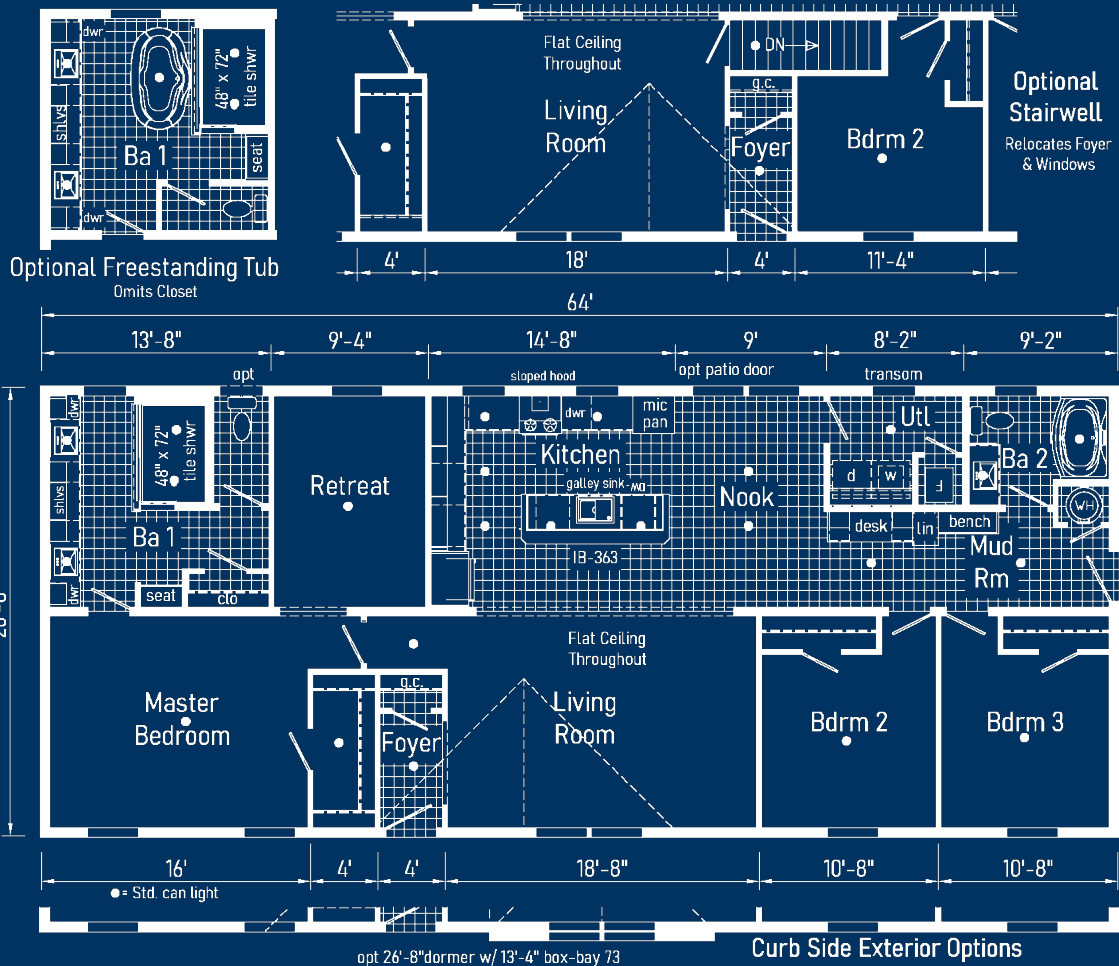
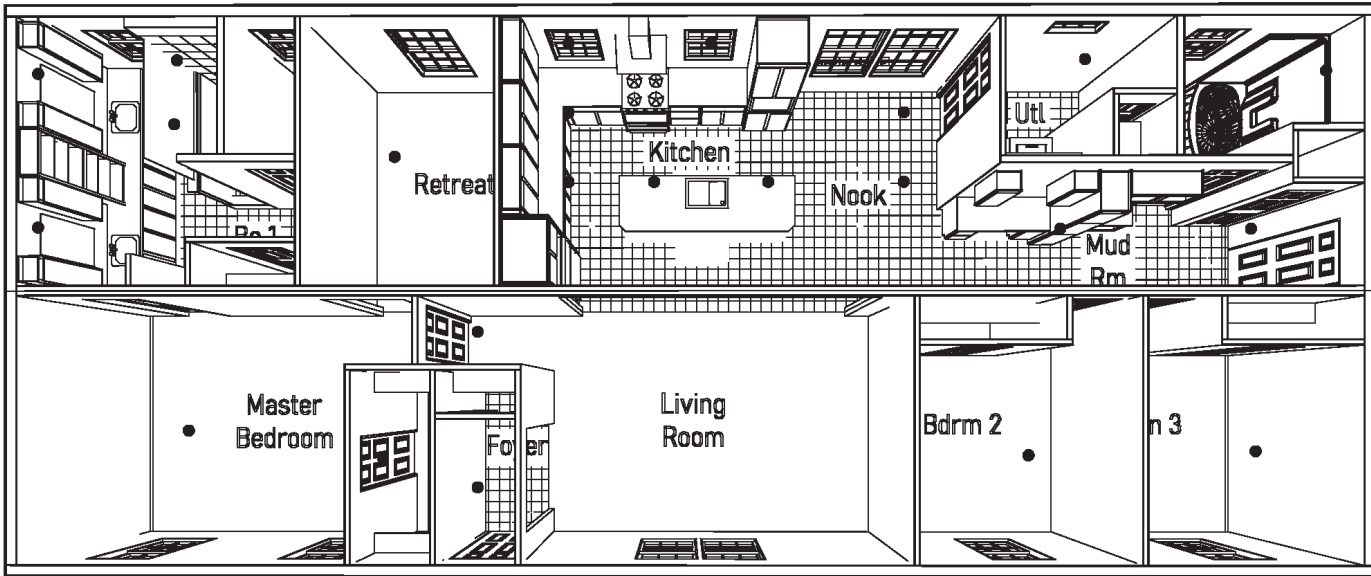
DEERCREEK ALLURE

DE3027P 2864

Approx. 1707 Sq. Ft.



DE3029P 2864 Approx. 1707 Sq. Ft.

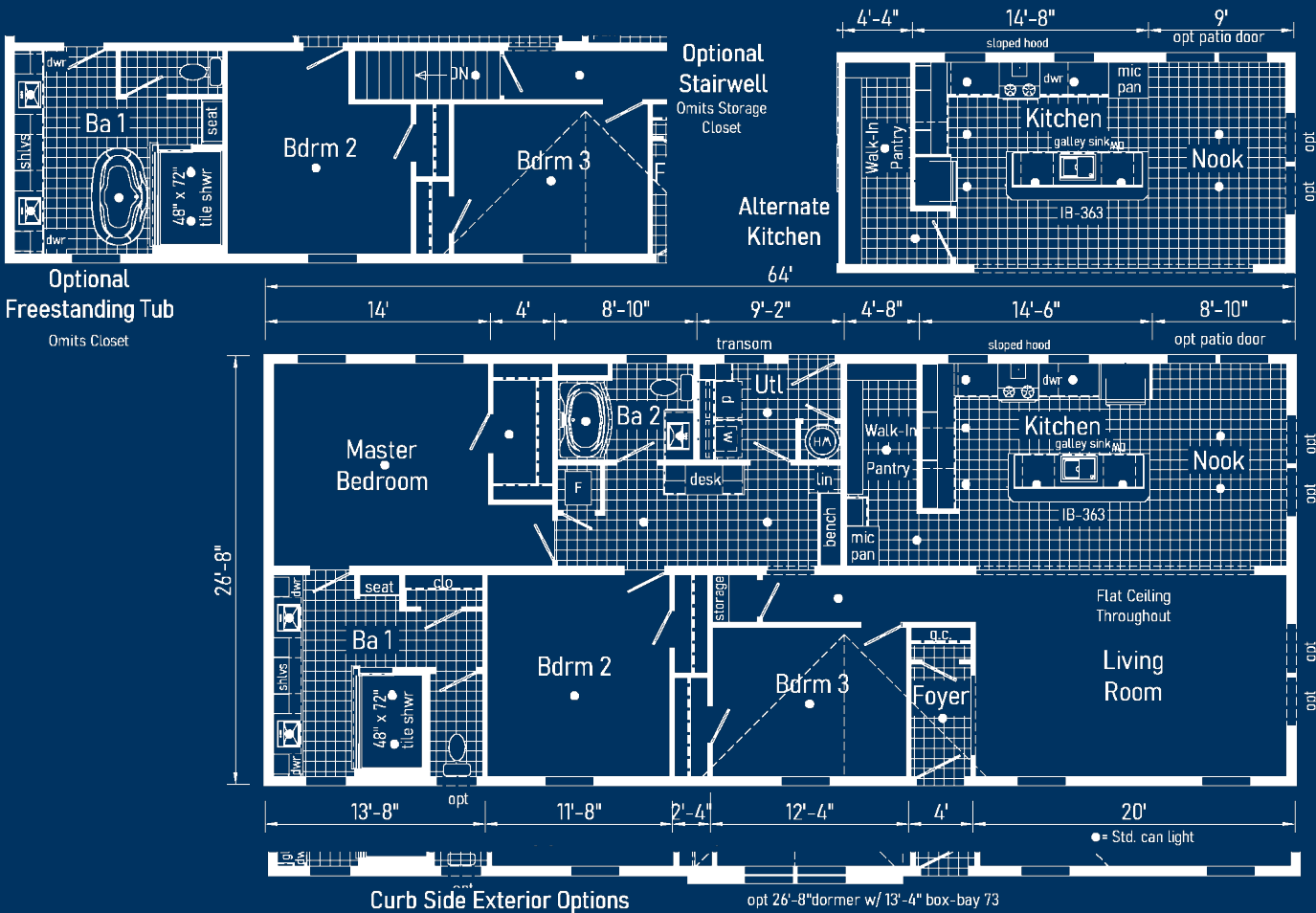
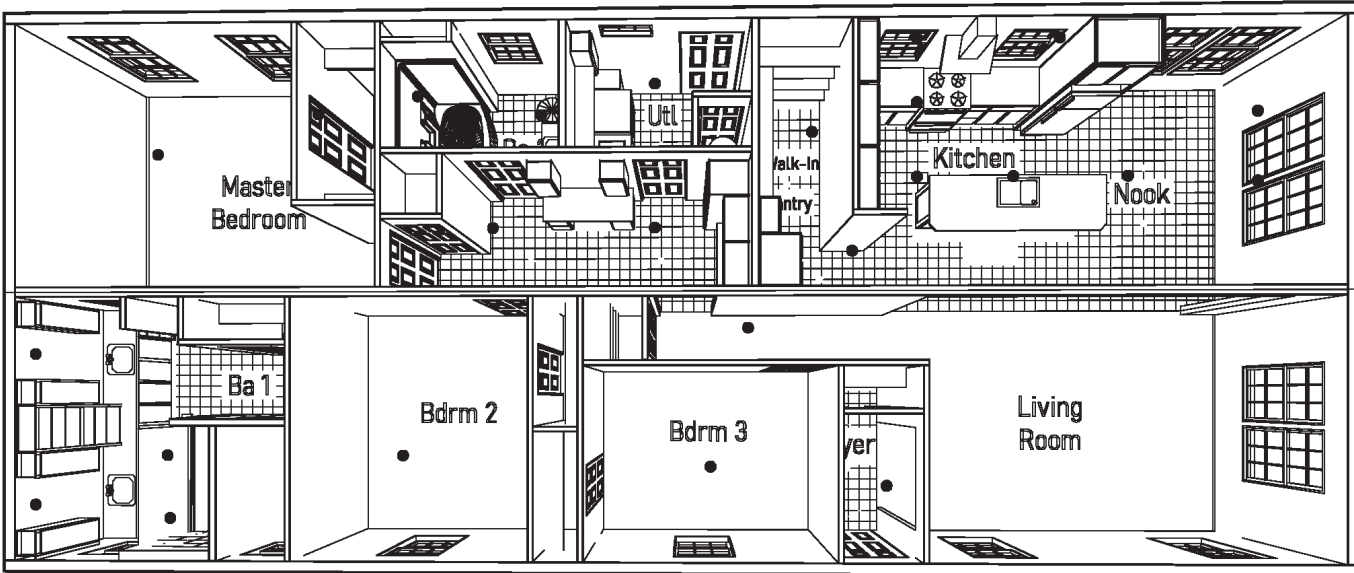


DEERCREEK ALLURE



DE3035P 2864

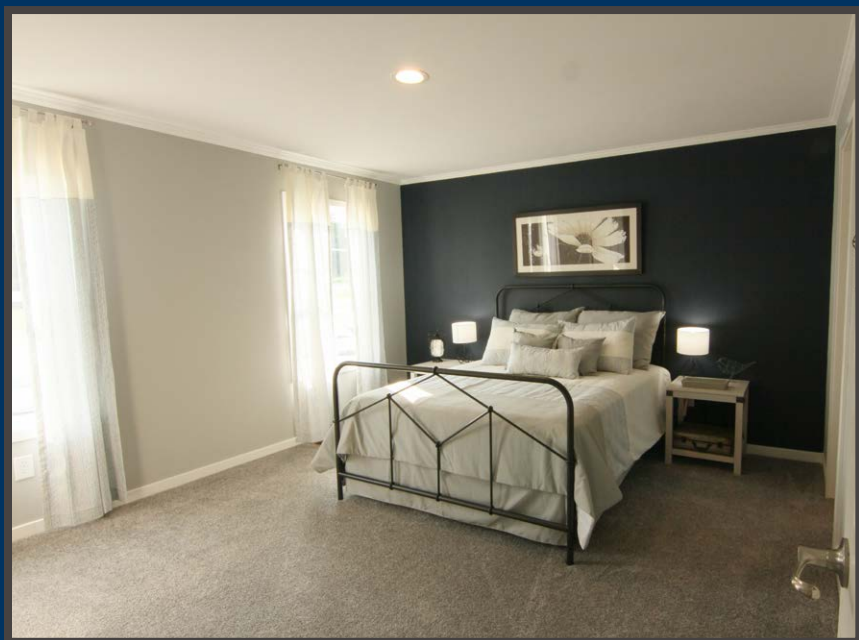
Approx. 1707 Sq. Ft.



DEERCREEK ALLURE

ALLURE

Deercreek



www.colony-homes.com/inhouse-experience

Find us on 



YouTube



**COLONY**
FACTORY CRAFTED HOMES

20510 Paint Blvd
Shippenville PA 16254
814-226-9590

info@colony-homes.com

www.colony-homes.com

Your Independent Builder is:

Your purchase contract including options is with your retailer who is an independent contractor, not our agent, and is responsible totally for any alterations, exchanges, additions or attachments made in or to your home.

All descriptive representations of the products on this brochure are believed to be correct at the time of publication. However, due to continued product improvement and changes in suppliers design and production, accuracy cannot be guaranteed. Therefore, equipment colors, material specifications, prices and model availability are subject to change without notice. All information and images contained in this brochure are property of Commodore Homes and for the use by active dealers of the company only. © CH 1/23